

RBHraCaNacRkkm&a

Cati - sasna - RBHmhakSRt



Tinny s Man; 2 b M e Gay karvine yak

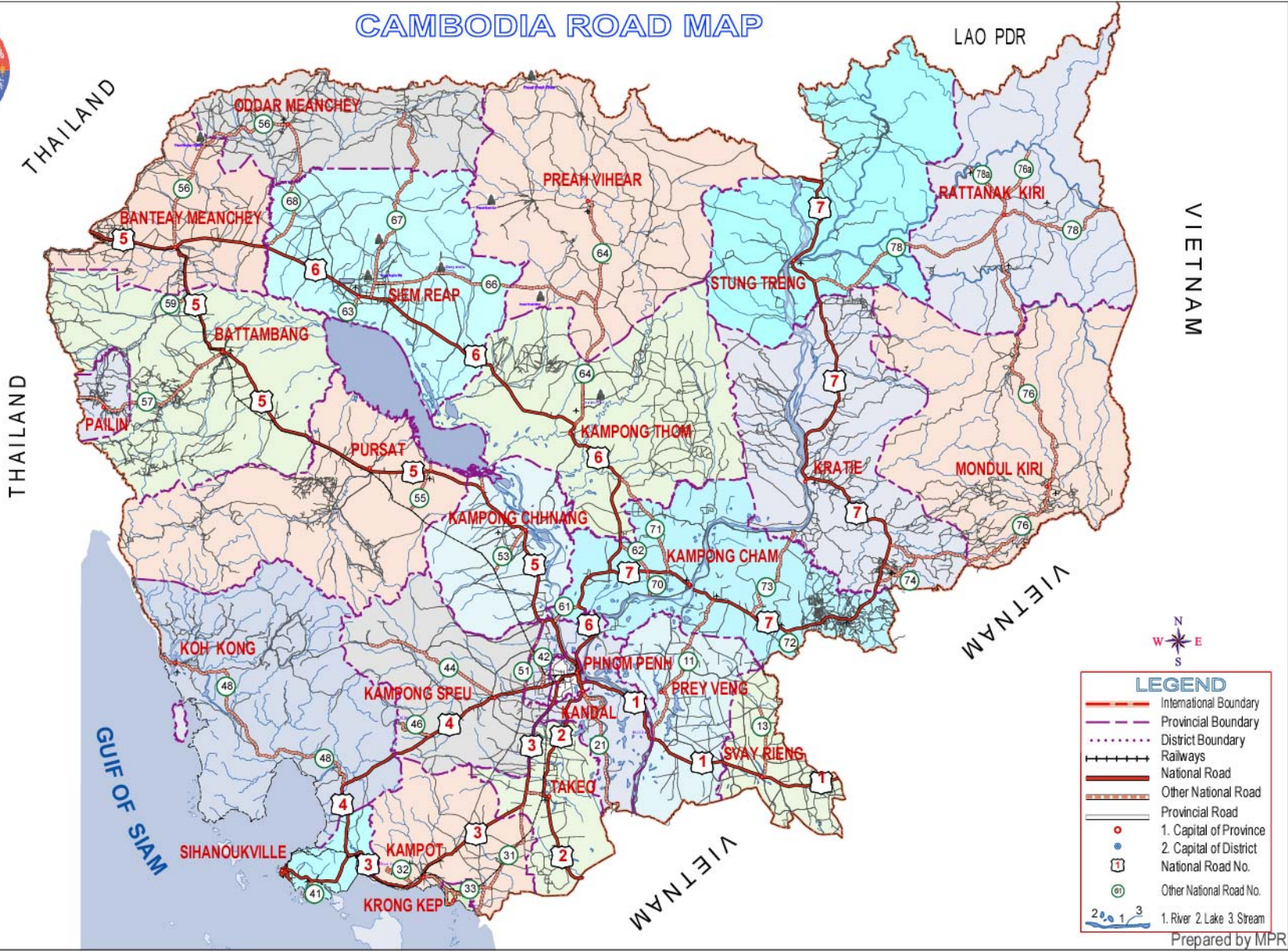
rbsex t p Rk g

RkmRbikSaGPivDAn_km&a

2005



CAMBODIA ROAD MAP



LEGEND

- International Boundary
- Provincial Boundary
- District Boundary
- Railways
- National Road
- Other National Road
- Provincial Road
- 1. Capital of Province
- 2. Capital of District
- National Road No.
- Other National Road No.
- 1. River 2. Lake 3. Stream

ផែនទីទេសចរណ៍ នៃ ព្រះរាជាណាចក្រកម្ពុជា

TOURISM MAP OF THE KINGDOM OF CAMBODIA



List of Hydropower Projects for Private Sector Participation

No	Project Name	Instal.Capac(MW)/Ann Energy	Estim. Project Cost (MUS\$)	Remark
1	Kirirom IV	23/102	56	D/S; P
2	Kirirom III	13/70	29	D/S; P
3	Kamchay	127/558	250	F/S;P;I
4	Battambang II	36/187	65	D/S; P
5	Battambang I	24/120	49	D/S; P;I
6	Stung Atay	110/558	156	D/S; P;I
7	Middle Stung Russey Chrum	125/668	275	D/S; P
8	Lower Stung Russey Chrum	125/656	130	D/S; P
9	Upper Stung Russey Chrum	32/221	65	D/S; P
10	Stung Cheay Areang	260/1,350	502	D/S; P
11	Stung Tatay	80/250	215	D/S; P
12	Sambor	467/2,800 - 3,300/14,870	3,940	D/S; P;I
13	Lower Sre Pok II	222/1,174	339	Pr/S;P
14	Lower Sesan II	207/1,065	374	Pr/S;P

D/S=Desk Study

Pr/S=Preliminary Study

PF/S= Pre-Feasibility Study

F/S= Feasibility Study

P=Power

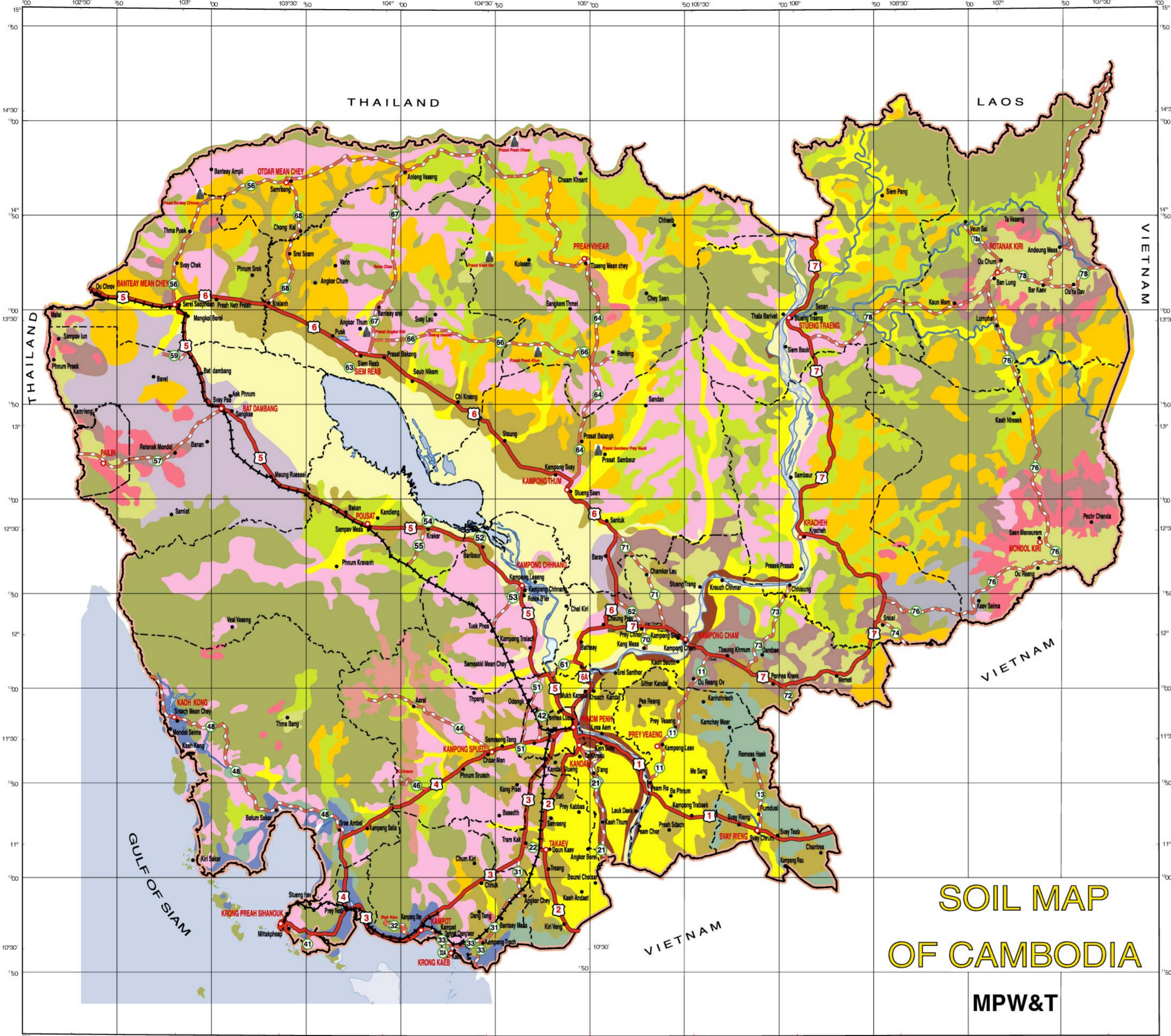
I=Irrigation



KINGDOM OF CAMBODIA
Nation Religion King

LEGEND

-  Red-yellow podzols ប្រភេទព្រៃ : ព្រៃឈ្មោះ " គ្បែង " ក្នុងតំបន់ស្ងួតព្រៃក្នុងតំបន់ភ្នំពេញ ។
-  Latosols ដំណាំ : គេស្រូវ (កំពង់ចាម ក្រចេះ រតនគិរី) ឈើហូបផ្លែ ការព្យ (បាត់ដំបង) ប្រភេទព្រៃ : ព្រៃចំរុះ ព្រៃឫស្សី ។
-  Planosols ដំណាំ : ដំណាំស្រូវ ប្រភេទព្រៃ : ព្រៃចំរុះ ។
-  Plinthite podzols ដីខ្លាច ហិល រិចរិល ប្រភេទព្រៃ : ព្រៃឈ្មោះ ។
-  Cultural hydromorphics ដីស្រែរិចរិល លិចទឹក ដំណាំសណ្តែក នេរដូរព្រាំង ដំណាំស្រូវ ។
-  Grey hydromorphics ដំណាំ : ស្រូវ ឈើហូបផ្លែ បន្លែ ប្រភេទព្រៃ : ព្រៃចំរុះ និង ព្រៃឃ្លីក ជាតិសេសនេរតំបន់ទំនាប ។
-  Plinthitic hydromorphics ដីមិនជ្រាបទឹក ត្រូវទុកជាតំបន់ព្រៃ ប្រភេទព្រៃ : ព្រៃឃ្លីក ។
-  Brown hydromorphics ដីល្អសំរាប់ស្រូវ ដំណាំហូបផ្លែ បន្លែ សណ្តែក ប្រភេទព្រៃ : ព្រៃឃ្លីក ។
-  Regurs ដីកង្ក មានជីជាតិល្អ ដំណាំស្រូវនេរតំបន់ទំនាប ឈើហូបផ្លែនេរតំបន់មិន លិចទឹក ។
-  Acid Lithosols ដីខ្លាចរាក់ មិនសូវមានជីជាតិ ជាតំបន់ព្រៃសំរាប់ការពារដី ប្រភេទព្រៃ : ព្រៃឈ្មោះនេរតំបន់ទំនាប ព្រៃឃ្លីកនេរតំបន់ភ្នំពេញ ។
-  Basic Lithosols ដីកង្កលាយគ្រួស ប្រភេទព្រៃ : ព្រៃឈ្មោះ (រាំងភ្នំ) ឬព្រៃឃ្លីកស្ងួត ។
-  Alumisols ដីមានជាតិពុលដោយសារអាលុយមីញ៉ូម ដំណាំស្រូវ (ទិន្នផលទាប) ប្រភេទព្រៃ : ព្រៃស្ងាច់ ។
-  Coastal Complex ដីល្អបំផុត ដំណាំ ដូង ស្រូវ តំបន់ទំនាប ម្ចាស់ បន្លែ ប្រភេទព្រៃ : ព្រៃកោងកាង ។
-  Brown Alluvial Soils ល្អបំផុតខ្លាច ដំណាំហូបផ្លែ ដំណាំគ្រប់ប្រភេទ (តំបន់ខ្ពស់) នេរដូរភ្នំមុនទឹកឡើង : ពោត សណ្តែក ។
-  Alluvial Lithosols ល្អបំផុតណាស់ ដំណាំស្រូវប្រដេញទឹក ស្រូវព្រាំង ដំណាំ ទស្សាហកម្ម (ពោត ថ្នាំដាក់) និងបន្លែគ្រប់ប្រភេទ ព្រៃលិចទឹកនេរដូរស្បូវ ។
-  Lacustrine Alluvial Soils ដំណាំស្រូវឡើងទឹក ស្រូវព្រាំង ដំណាំផ្សេងទៀតនេរដូរសំរក : សណ្តែក សណ្តែកស្បែង បន្លែ ប្រភេទព្រៃ : ព្រៃលិចទឹក ។



SOIL MAP OF CAMBODIA
MPW&T

INTERNATIONAL BOUNDARY	
PROVINCIAL BOUNDARY	
RAILWAY	
NATIONAL ROAD	
OTHER NATIONAL ROAD	

1. CAPITAL PROVINCE	
2. CAPITAL DISTRICT	
1. NATIONAL ROAD No.	
2. OTHER NATIONAL ROAD No.	
1. RIVER	
2. LAKE	
3. STREAM AND CANAL	

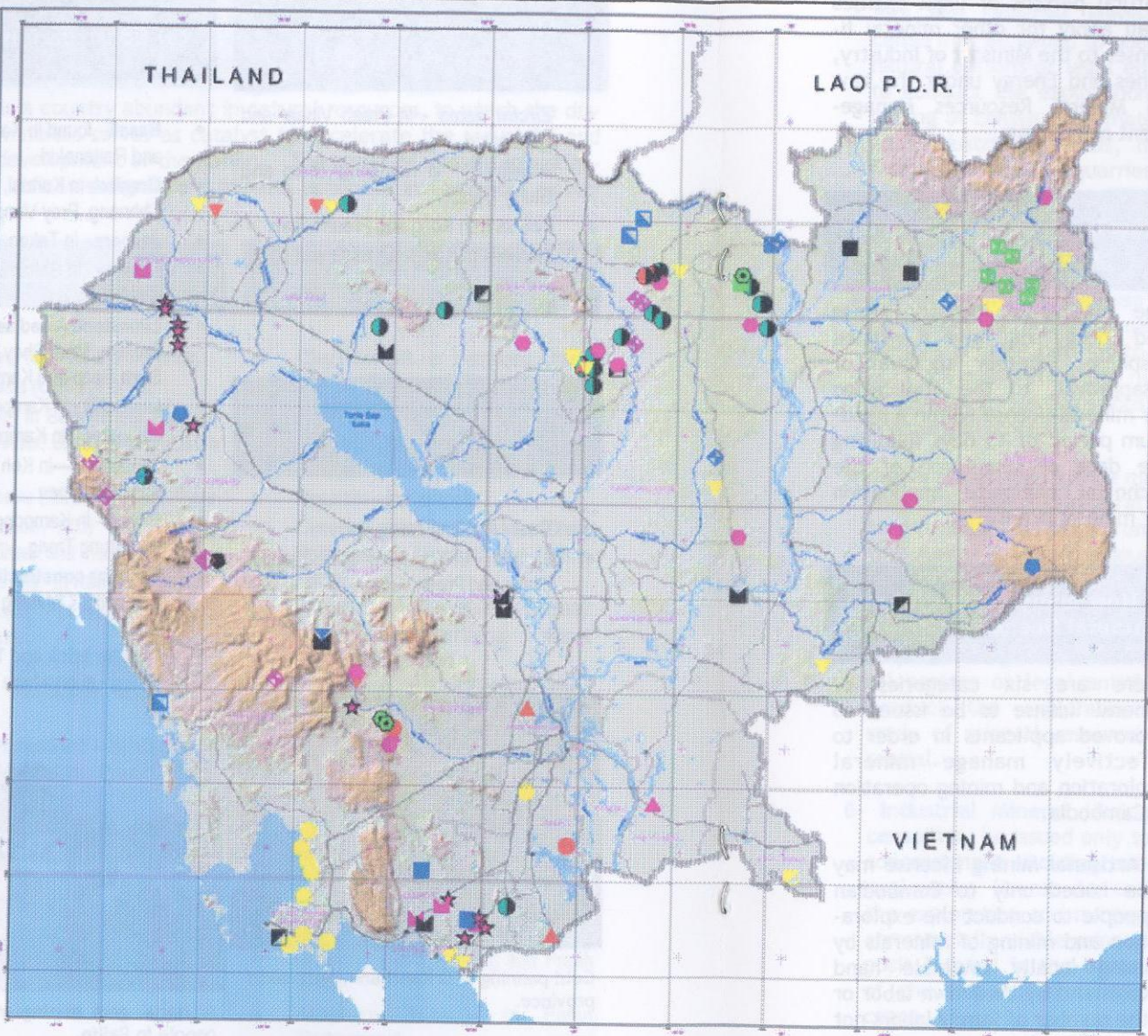
Source : (D. Crocker, 1963)
Les sols du Cambodge et Leur potentialite
TRAN CANH, 1997

THAILAND

LAO P.D.R.

CAMBODIA

Mineral Resource Map



LEGEND

- | | | |
|---------------------------------|-------------------------------------------------------------------------------------------------------------------------------------------------------------------------------------------------------------------------------------------------------------------------------------------------------|----------------------------------------------------------------------------------------------------------------------------------------|
| METALS | <ul style="list-style-type: none"> ▲ Silver ▼ Iron ● Lead ● Zinc ● Copper ● Manganese ● Au ● Niobium ▲ Molybdenum ● Ni ● Vanadium ● Antimony | TRANSPORTATION
<ul style="list-style-type: none"> — National Road — Provincial Road — Canal |
| HYDROLOGICAL | <ul style="list-style-type: none"> ■ Dam ■ Reservoir ■ Canals ■ Irrigation ■ Floodplain ■ Dry Season ■ Water ■ Other | ASSETS
<ul style="list-style-type: none"> — Oil Field — Gas |
| DEMONYM AND CONTOUR LINE | <ul style="list-style-type: none"> ◆ Administrative ◆ District ◆ Commune ◆ Village ◆ Hamlet ◆ Other | BOUNDARIES
<ul style="list-style-type: none"> — National — Provincial |
| PLANT | <ul style="list-style-type: none"> ■ Rubber ■ Coffee ■ Other | ADMINISTRATION
<ul style="list-style-type: none"> ○ Capital ○ Province |
| | ELEVATION RANGE
<ul style="list-style-type: none"> 100 - 500 m 500 - 1000 m 1000 - 1500 m 1500 - 2000 m 2000 - 2500 m 2500 - 3000 m 3000 - 3500 m 3500 - 4000 m 4000 - 4500 m 4500 - 5000 m | |

MINISTRY OF INDUSTRY, MINES AND ENERGY
 General Department of Mineral Resources
 Department of Geology

Scale 1 : 750,000

1993 National Institute of Geology, Cambodia, and IAGLR, Ottawa, Canada, 1993

matkar

№	ext. Rkg	TB½
1	bnlymanCly	08
2)atdlbg	12
3	kBgcam	16
4	kBgqatg	20
5	kBgsw	23
6	kBgFM	26
7	kBt	30
8	kNpl	34
9	ekalkg	37
10	Rkech	42
11	mNB KH	46
12	PtBj	50
13	RBvihar	54
14	RBVg	57
15	eBaFisat;	60
16	rtn³KH	64
17	esomrab	68
18	RkgRBHshnu	72
19	stjERtg	76
20	stjyrog	80
21	taEkv	83
22]tpmanCly	86
23	RkgEkb	88
24	Rkgébl n	91

extþingamymanCk

k- BtmanTtTA

1 - Tthnextp	3	esrtaPxl
2 - épRkLaextp ⁻¹	3	6679 Km ²
3 - sNandl	3	val rab
4 - GakasFatu	3	Gtbrima 33/1 °C Gb,rma 24/2 °C
5 - cthhRbCaCnsrb ⁻²	3	
• CthhRbCaCnqal1998	3	577-770 nak;
•)anspnshtbcpal2010	3	915-000 nak;
• RbCaCn18qalLg ⁻³	3	336-065 nak;
- kúgenalRsl	3	173-848 nak;
- Rbis	3	162-217 nak;
6 - dgsbt	3	87 nak/4km ²
7 - cthhRsk ⁻³	3	8
8 - cthhXl ⁻³	3	64
9 - cthhPthi ⁻³	3	624
10 - RBRbTl ;	3	xagekltCabextpsomrab
	3	xaglicCabRbeTséf
	3	xageCbCabextþtþmanCk nigRbeTséf
	3	xagt,lgCabextþat,dllg
11 - RckGrpCati	3	e)ayEb:t
12 - Rcktbln;	3	byRtkh mael
13 - brimaNTikePóg -Kit CamFüm!	3	1>310mm ¼qdl

x- viskykskmp

1 - dlnNalsU	3	198-975 ht
Thp l	3	1/8 t/ht
2 - dlnNallsSahkmp	3	11>90 ht
• kúgenalhsENþesog	3	6013 ht
3 - cMarEpøQl	3	2-948 ht
4 - dlnNalþpSM	3	80-294 ht
• kúgenalman ³ - eBat	3	4-538 ht
- sENþ)ay	3	3-313 ht
5 - Cl pl		
• pl ensaTTiksab	3	945 t

• varlv, km ² kSab - RkeBl,	3	2971 k,al
6- bsstlvqal 2003		
• srbeKa-Rkbl	3	145132 k,al
• karcBa ³ stCal kN ³ ksidan		
- srbrCK	3	178521 k,al
- srbrstKsab	3	352122 k,al

K- visyehdarcnasms

1- saFarNkar ³		
• púCatBP ³ Bj - Trhextp	3	359Km
• púEdkBP ³ Bj - Trhextp	3	338Km
• kN ³ NatpúCatk ³ gextp	3	
- púCatel x 5	3	74Km
- púCatel x 6	3	48/5 Km
- púCatel x 18	3	17 Km
- púCatel x 56	3	66/5 Km
2- famBl - Tksst		
• famBl GK ³ snl		
- GanPaBtMlg	3	2290 KVA
- GanPaBpl it)an	3	1570 KVA
- tM	3	1900 erol 1/4 Kwh
• Tksst		
- smtPaBpl it	3	4000 m ³ 1/4 f ³
- brmaNpl it)an	3	1800 m ³ 1/4 f ³
- tM	3	1500 erol 1/4 m ³
• varGK ³ snl ³ {skpBl }		
- slmgA bnt1		
clayBITrhextp	3	60Km
kM abj	3	7 MW
- slmgA bnt2		
clayBITrhextp	3	63Km
kM abj	3	7 MW
3- kardkCBah		
• Eps ³	3	kBgskSaerobclayRkmhtnEkCn
• tM dlkCBah	3	
- púEdk		

>Tilj	3	77 erol ¼etan>Km
>GfcdNlr	3	60 erol ¼nak>Km
• pteKakeTAPBj		
- kgETnW20ht	3	Bath 25>300 ¼kgETnW
4- GakascrN ₃		
• RBl anynphatfrakCati	3	kBgskSaerobcblayRkmhntÉkCn
5- FarasaRsp	3	
• RbBrFarasaRsp	3	125 kEng
• I TPaBersacsRsb	3	35576 ht
- kjenalRsuvsSa	3	34483 ht
- RstR)atj	3	1093 ht
• SlnlybhtTk	3	1 kEng

X- vis/yesvakmp

1- GbrM		
• chlhmhavitual ¼ÉkCn	3	3 chlhsis ³ 628 nak;
• chlhsal amF ümskSa	3	38 chlhsis ³ 28>110 nak;
2- Ttkmnakmn ₃		
• bNbj bBafslj al ;	3	kabGbtic Microwave
• RbBrTts BGC l ¼	3	MPTC, CAMINTEL -manenATrhextpnige)ayEb.t ;
- tll esvaTts Bk gRsk	3	1 esn- 10 esn du a/naTI
• RbBrTts Bcl ¼	3	CAMSHIN, MOBITEL, CASACOM
- tll esvaTts Bk gRsk	3	4 esn- 11 esn du a/naTI
- RskmanesvaTts B	3	
>CAMSHIN	3	RskesrtesaPPI mgÁ btl GbRCA mæL
>CASACOM	3	RskesrtesaPPI mgÁ btl GbRCA mæL fBk
>MOBITEL	3	RskesrtesaPPI mgÁ btl GbRCA mæL fBk
• tll esvaTts BTAerKARbeTs	3	80 esn- 180 esn du a/naTI
3- swaP)al ³		
• mnbeBTübEgktamextp	3	4
• chlMERK	3	453
• smtPaBBüa)al ³		
- CPA1	:	1
- CPA 2	:	2
- CPA 3	:	1

g- vis/yeTscrN₃

1- sarmnb	3	sarmnbextp
2- rmNlydnRovtIsaRsp	3	R)asaTbnayqpr R)asaTbnayTB
3- rmNlydnFmCati	3	P)bnaynag P)ntc P)ak; P)Baaj P)isay RtBaajfj
4- sNaKar ³		
- chhsNaKar	3	13 chhbnb; ³ 1x34
5- p#s#Nak; ³		
- chhp#s#Nak;	3	23 chhbnb; ³ 459

c- FnFanFmCati³

1- FnFanEr:		
• fkb)ar	3	s)spn (**)
• Erp)st	3	P)ak; (**), P)Baaj (**), P)bnaynag (**), P)asaT (*) P)ntc (**)
2- EdnChks t)RB		
• rnamd)ssM	3	178x750 ht -ep)kLaenHKitsr)T)ajChks t)RBnamd)ssM d) s)k)gext)at)d)g;
3- t)bnkarBareTsPaB		
• bnayqpr	3	81x200 ht

q- vis)ysk)pnBI nigGaTPaBss)mbkarGPivD)neBI GnaKt³

- 1- K)ragGPivD)nr)k)at)bnRB)dnkm)ca-éf
- 2- K)ragt)bn)jsSahkm)ayEb)t
- 3- BRgké)pl)at)ssU
- 4- ksi-)jsSahkm)
- 5- esvab)teTscrN_
- 6- e)FGaC)vk)mf)FnFanEr:

-1 | ÉksarRks)gmhá)pl)alM 998
-2 | esovePAS)ical2003
-3 | r)aykarNRks)gmhá)pl)al2004
(*) t)bn)sk)S)ak)C)aveR)kan MOU (**) t)bnEd)l)anp)l)sm,Tan

extpatdbg

k- BtmanTETA

- 1- Thhextp 3
- 2- épkLaextp⁻¹ 3
- 3- sNandl 3
- 4- GakasFatu 3
- 5- chhRbCaCnsrb⁻² 3
 - CAtOrbCaCnoam 998 3
 -)anspncal 2010 3
 - RbCaCn18qamLg⁻³ 3
 - kügenalRsl 3
 - Rbus 3
- 6- dgsbt 3
- 7- chhRsk⁻³ 3
- 8- chhXM⁻³ 3
- 9- chhPthi⁻³ 3
- 10- RBRbTl ; 3
- 11- RckGrpCati 3
- 12- Rcktbn; 3
- 13- brmaNTikePög -KitCamFüm; 3

-)atdbg
- 11>702 Km²
- EckCatbn;TTabl icTik tbnxgrab tbnval TTab tbnRBP M
- Gtbrma³ 33 °C Gb,brim² 23/2 °C
- 793>120 nak;
- 1>156>000 nak;
- 496>147 nak;
- 257>534 nak;
- 238>613 nak;
- 68 nak/4Km²
- 13
- 96
- 741
- xagektCabextpBaFsat; nigTensab
- xagl icCabRkgeb: l h nigRbeTséf
- xageCbCabextpbnymancly
- xagt,lgCabextpBaFsat;
- Rckdbg
- Phl Gtrbm shTM bygqatj Rck400
- 1>268/3 mm ¼qam

x- vislykskmp

- 1- dNalRslU 3
- Tripl 3
- 2- dNalRslSahkmp 3
 - kügenalman³ - sEN jcdl 3
 - sEN kesog 3
 - l q 3
- 3- cMarEp eOl 3
- 4- dNalRslpSM 3
 - kügenalman³ - eBat 3
 - sEN(k)ay 3
- 5- Cl pl 3
 - pl ensaTTksab 3
 - varlvb, kmTksab 3
 - RtIsac; 3
 - RkeBl 3
- 6- bsistlvqam 2003

- 315>100 ht
- 2/17 t/4ht
- 43>000 ht
- 4800 ht
- 23>600 ht
- 13>000 ht
- 4>181 ht
- 57>000 ht
- 43>300 ht
- 9>000 ht
- 10>000 t
- 520 t
- 10>300k,al

- srbKa-Rkbl 3 164869k,al
- karcBamstCal kN³ksidan
 - srbRCk 3 89218 k,al
 - srbstKsab 3 804896 k,al

K- visyehdarcnasms

1- saFarNkar

- pūCatBPBj -Trhextp 3 291 Km
- pūEdkBPBj -Trhextp 3 274 Km
- kN³NatpūCatk³gextp
 - pūCatēl x 5 3 114 Km
 - pūCatēl x 57 3 63 Km
 - pūCatēl x 59 3 16/33 Km

2- famBI -Tksāt

- famBI GKġnl
 - GanPaBtMlg 3 1950 KVA
 - GanPaBpl it 3 1475 KVA
 - tēl 3 1000 erol ¼ Kwh
- Tksāt
 - smtPaBpl it 3 4000 m³ ¼ef³
 - brimaNpl it)an 3 3500 m³ ¼ef³
 - tēl 3 1400 erol ¼m³
- varGKġnl³ {skanBI }
 -)atdkgT1 (P) 3 D/S, P
 - ctJayBITrhextp 3 40 Km
 - kW abj 3 24 MW
 -)anspntēl Kbrag 3 49 MSUS
 -)atdkgT2 (P) 3 D/S, P, I
 - ctJayBITrhextp 3 120 Km
 - kW abj 3 36 MW
 -)anspntēl Kbrag 3 65 MSUS

3- kardkCBa³

- tēl dkCBa³
 - pūEdkeTAPBj
 - Tkij 3 77 erol ¼etan>Km
 - GkdNtr 3 45 erol ¼nak>Km

4- GakascrN³

- RBl anynphaHfakCati
 - xāt 3 3 c
 - RbePTynphaHclct 3 ATR72, AN24, Y12, Y7
 - smtPaBTTV GkdNtr 3 250000 nak;¼qdm

5- FarasaRsp³

- RbBnFJarasa®sp 3 60 kEng
- I TPaBersackSB 3 59292 ht
- kújenalRSUvSa 3 55045 ht
- RStUR)atj 3 4247 ht
- sánlybthTik 3 10 kEng

X- víslyesvakmp

1- GbrM

- chhmvhaviTual Yyrdae 3 1 chhhsisS³ 145 nak;
- chhmvhaviTual YyÉkCn 3 1 chhhsisS³
- chhsal amF ümskSa 3 51 chhhsisS³ 34871 nak;

2- Ttkmnakmn³

- bNbj bBafSij al; 3 kabGwTic Microwave
- RbBnFUS BGC l % 3 MPTC, CAMINTEL
- tll esvaTUS Bk gRsk 3 1 esn-10 esn du a ¼naTI
- RbBnFUS BGC l % 3 CAMSHIN, MOBITEL, CASACOM
- tll esvaTUS Bk gRsk 3 4 esn-11 esn du a ¼naTI
- RskmanesvaTUS B 3
- . CAMSHIN 3 Rsk)atdlbg emagbsSISEgá bvil fpaKal
- . CASACOM 3 Rsk)atdlbg emagbsSISEgá ÉkPm fpaKal rtmND
- . MOBITEL 3)aNn;
- Rsk)atdlbg emagbsSISEgá bvil fpaKal PABk kRog
- tll esvaTUS BTAerKARbeTs 3 80 esn-180 esndu a ¼naTI

3- swaP)al³

- mnpeBTübEgktamext p 3 4
- chhERK 3 590
- smtPaBBüa)al
- CPA 1 : 1
- CPA 2 : 2
- CPA 3 : 1

g- víslyeTscrN_

1- sarmnp

2- rmNlydanRvvt)saRsp

3- rmNlydanFmçati

4- sNaKar

- chhsNaKar 3 10 chhbnb;³ 398

5- p#sINak;³

- chhphsINak; 3 4 chhbnb;³ 76

c- FnFanFmçati³

sarmnxt p
 R)asaTvt(EkPmR)asaT)aNn; R)asaT)aEst
 R)asaT)styxagekt R)asaT)styxag l c
 GagkBgBY PABA esksk sigRkj g bntyst)abCratj
 BRCCrnp dgTg; Pkkg chh gky

1 -FnFanEr:

- ErfK()ar 3)atdlbg P()BA
- Ermas 3 fmas (*)
- ErEdk 3 P()Bc (*)
- Erp()st 3 P()BA
- ErGal ymlj th 3)atdlbg
- Er()t, ()fj 3 brLag (**), sMLt (**), Gn()rkeBl (*)

2 -EdnChk st()RB

- rnamdl()sM 3 178>750 ht -épRkLaenHKitsr()TadjChk st()RB rnamdl()sM Edl s()k()ext()n()ymanc()y ;
- P()B()s 3 333>750 ht -épRkLaenHKitsr()TadjChk st()RB P()B()s Edl s()k()ext()k()k()g ext()p()BaFisat ;

3 - t()neR()R)aseRch yag

- sMLt 3 60000 ht -épRkLaenHKitsr()Tadj t()neR()R)aseRch yagsMLt Edl s()k()gRkgeb: i n' ;
- Tensab 3 316>250 ht -épRkLaenHKitsr()Tadj t()neR()R)aseRch yag Tensab Edl s()k()ext()k()g()q()d ext()p()gFM ext()p()somrab ngext()p()BaFisat ;

q- vis()y sk()n()Bl nigGaTPaBs()MbkarGPivDineBl GnaKt 3

- 1 - K()ragGPivDineBl K()t()n()RB()n()km()a-éf
- 2 - ksk()m()-dl()N()a()R()S()U dl()N()a()l()s()Sah()k()m() dl()N()a()h()b()Ep()d
- 3 - t()n()j()s()Sah()k()m()
- 4 - k()s()j()s()Sah()k()m()
- 5 - varGK()s()nl
- 6 - esvab()teTscrN
- 7 - eF()G()C()v()k()m()FnFanEr:

-1 | ÉksarRk st()gm()hae()p()ra()l 998

-2 | esovePAS()f()ra()l 2003

-3 | r()y()karNRk st()gm()hae()p()ra()l 2004

(P) K()ragGaTPaB

(*) t()n()Sk()S()a()v()C()aveRkam MOU (**) t()n()Edl ()an()pl()sm, Tan

D/S: K()ragSk()SatamRT()s()p P: famBl I: kareksacsB

ext kBgcam

k- BtmanTETA

1 - TInextp	3	kBgcam
2 - épRkLaextp ⁻¹	3	9>799 Km ²
3 - sNandl	3	tInxgrabmanl kN ³ dRkkm tIn;TTab tIn;tandgTern
4 - GakasFatu	3	Gtbrma 34 c° Gb,brima 28/2 c°
5 - cMhRbCaCnsrb ⁻²	3	
• qall1998	3	1>609900 nak;
•)ansp,qall2010	3	2>146>900 nak;
• RbCaCn18qallLg ⁻³	3	958>424 nak;
- kigenalRsl	3	570>322 nak;
- Rbis	3	388>102 nak;
6 - dgsbt	3	164 nak/Km ²
7 - cMhRsk ⁻³	3	16
8 - cMhXM ⁻³	3	173
9 - cMhPthi ⁻³	3	1>765
10 - RBRbTl ;	3	xagektCabextRkech nigRbeTsevoT Nam xagl icCabextkBgqad xageCgCabextkBgFM xagt,icCabextkNpl nigextleRBEvg
11 - Rck tIn;	3	Rckdar RckcanmU RckCaRkevon
12 - RckeTPaKl	3	RtBaldpog
13 - brimaNTikePog -Kit CamFüm!	3	1>18/1 mm ¼ qall

x- visy/kskmp

1 - dInNalsU	3	207>157 ht
Tinp I	3	2/48 t¼ht
2 - dInNallsSahkmp	3	149>212 ht
• kigenalman ³ - ekAsttæ	3	59861 ht
>Tinp I	3	1/16 t¼ht
>eFGaCvkmp	3	21>708 ht
minTaneCorC½	3	9810 ht
- ekAsRKSar	3	15>187 ht
>Tinp I	3	1/16 t¼ht
>I TPaBBRgdaMafP	3	3>900 ht/qall
- sENkdl	3	4>513 ht
- sENkesog	3	29958 ht

- GABA	3	1443 ht
- I 9	3	16745 ht
- falk;	3	3998 ht
- stycnb	3	17135 ht
3- cMarEp eOl	3	32861 ht
4- dMNaMhpsM	3	36108 ht
• kigenahman	3	1443 ht
3- eBat	3	1443 ht
- sEN(k)ay	3	9659 ht
5- Cl pl		
• pl ensaTTksab	3	14300 t
• varlvb, kmTksab Rtsac;	3	850 t
6- bsistVqal2003		
• srbKa-Rkbl	3	463091 k,al
• karcBamstCal kN ³ ksdan		
- srbRCk	3	210332 k,al
- srbstVab	3	1710707 k,al

K- visyehdarcnasms

1- saFarNkar

• púCatBPBj eTATHex tp	3	124 Km
• púTkBPBj dl ;THex tp	3	105 Km
• extkBgcameT Aext kkech	3	116 Km
• kMnatpúCatkgextp		
- púCatel x 6	3	52/16 Km
- púCatel x 7	3	167/07 Km
- púCatel x 8	3	14/06 Km
- púCatel x 11	3	22/18 Km
- púCatel x 60	3	19/06 Km
- púCatel x 61	3	11/12 Km
- púCatel x 70	3	13/54 Km
- púCatel x 71	3	42/43 Km
- púCatel x 72	3	13/5 Km
- púCatel x 73	3	49/59 Km
- púCatel x 222	3	35 Km

2- famBI - Tksyt

• famBI GKsni		
- GanPaBtMlg	3	3/6 kw
- GanPaBpl it	3	2/5 kw

- töl erol ¼ Kwh	3	850 erol ¼ Kwh
• Tiksit		
- smtPaBpl it	3	5760 m ³ ¼ef
- brimaNpl it)an	3	1560 m ³ ¼ef
- töl	3	550 erol ¼m ³
3- kardkCBað		
• kBgEpkBgcam TlhM	3	4000 m ²
• Tenbit TlhM	3	4000 m ²
• töl dkCBað		
- plékak	3	0/9 dl a ¼ t>Km
- pléTik	3	0/6 dl a ¼ t>Km
4- FarasaRsp	3	
• RbBnZarasa®Sp	3	340 kEng
• I TPaBersacsB	3	85277 ht
- kúgenalRSUvsSa	3	51277 ht
- RstR)adj	3	33966 ht
• sanlybthTik	3	4 kEng

X- visyevakmp

1- GbrM	3	
• chhmvatual yrdæ	3	1 chhmvatual
• chhmvatual yÉkCn	3	17 chhmvatual 815 nak;
• chhsal amFúmskSa	3	70 chhmvatual 67284 nak;
2- Tlkmnakmn_		
• bNbj bBafsljal ;	3	Microwave
• RbBnTtsBScI ½	3	MPTC, CAMINTEL
- töl esvatTsBkúRsk	3	1 esn- 10 esn dl a/naTI
• RbBnTtsBScI ½	3	CAMSHIN, MOBITEL, CASACOM
- töl esvatTsBkúRsk	3	4 esn- 11 esn dl a/naTI
- RskmanesvatTsB	3	
>CAMSHIN	3	RskkBgcam kBggesom eRBQr eCgeRB)aFay ekaHStIn Bj aERkk emmt; sgrtg; cMarel I
>CASACOM	3	RskkBgcam eRBQr eCgeRB)aFay Bj aERkk emmt; kgas t, XpMarel I
>MOBITEL	3	RskkBgcam kBggesom eRBQr eCgeRB)aFay RslsnS ekaHStIn kgas Gtradj» Bj aERkk t, XpMarel I emmt; Rktqar sgrtg;
• töl esvatTsBTAerKARbeTs	3	80 esn- 180 esn dl a/naTI

3- sxaP)al		
• mnheBTübeGktamextp	3	10
• chMERK	3	1000
• smtPaBBü)al		
- CPA1	:	1
- CPA 2	:	6
- CPA 3	:	3

g- visyeTscrN_		
1- rmNlydnRvvtIsaRsp	3	RyasaTnKr)aCy RyasaTPManCy PnCyRB Pnbs Pnsl Pn al a Ggkng-GgterKA
2- rmNlydnFmÇati	3	Tkqa
3- sNakar ³		
• chhsNakar	3	6 chhbrb; ³ 208
4- p#sNak; ³		
• chhp#sNak;	3	34 chhbrb; ³ 272

c- FnFanFmÇati		
1- FnFanEr:		
• Ermas	3	rck (**)
• dNæ	3	ERBkkk;

q- visy skpnBI nigGaTPaBsMbkarGPivDineBI GnaKt ³		
1- dNnakASU		
2- ksi-]sSah kmj		
3- karp l iteRKOgsçarmBèdmekASU		
4- kskmp- dNn al h b EpodN al]sSah kmj		
5- Rb B# Farasaksp		

-1 | EksarRkstgmhæpçal 998
-2 | esovePASitçal 2003
-3 | r)aykarNRkstgmhæpçal 2004
(**) t)nd l)anpl Sm, Tan

ext k B g a d j

k- BtmanT0TA		
1 - Trhex tp	3	k B g a d j
2 - ep Rk Laex tp ⁻¹	3	5521 Km ²
3 - sN andl	3	xgrab val rab
4 - GakasFatu	3	Gtbrma ³ 32/5 °C Gb,brma ³ 23/4 °C
5- cMhRbCaCnsrb ⁻²	3	
• qall 998	3	417-693 nak;
•)anspncal 2010	3	596-000 nak;
• RbCaCn 18 qall Lg ⁻³	3	234-799 nak;
- kujenal RSI	3	128-559 nak;
- Rbis	3	106-240 nak;
6- dgsbt	3	94 nak/4km ²
7- cMhRsk ⁻³	3	8
8- cMhXM ⁻³	3	69
9- cMhPthi ⁻³	3	551
10- RBRbTI ;	3	xagekt Cabext k B g cam
	3	xag l ic Cabext k B a f s at;
	3	xageCb Cabext k B g FM
	3	xagt, g Cabext k B g s W
11 - brimaN Tke Pog -Kit CamFum;	3	1-4738 mm 1/4 qall
x- vis kyskmpj		
1- dMNaRISU	3	110-219 ht
Trop I	3	1/72 t/4ht
2- dMNaJlS Sah kmpj	3	841 ht
kujenalman ³ sEN jcdl	3	243 ht
3- cMarEp eOl	3	810 ht
4- dMNaThpSM	3	6048 ht
kujenalman ³ - eBat	3	1-369 ht
- sEN (k) ay	3	1-296 ht
5- Cl pl		
• pl ensaTtk sab	3	26-400 t
• varlvb, kmjtk sab		
-Rtsac;	3	3-640 t
-RkeBl	3	1-729 k, al
• pl ensaTnabcj	3	5-903 t
6- bsstVqal 2003		
• srbKa-Rkbl	3	224-825 k, al
• karcBamstCal kN ³ ksidan		
- srbRCk	3	131-911 k, al
- srbstKsab	3	631-478 k, al

K- visyeh darcnasm

1- saFarNkar

- púCatBPBj eTATInextp 3 91 Km
- púEdkBPBj eTATInextp 3 77 Km
- kN NatpúCatKj extp³
 - púCatel x 5 3 94 Km
 - púCatel x 52 3 79 Km
 - púCatel x 53 3 28/2 Km

2- famBI - Tiksit

- famBI GKIsnl
 - GanPaBtMlg 3 2000 KVA
 - GanPaBplit 3 1030 KVA
 - tMl 3 1000 erol ¼ Kwh
- Tiksit
 - smtPaBplit 3 1200 m³ ¼ erol
 - brimaNplit)an 3 500 m³ ¼ erol
 - tMl 3 1000 erol ¼ m³

3- kardkCBadi

- tMl dkCBadi
 - púEdkeTAPBj 3 77 erol ¼ etan > Km
 - Thij 3 45 erol ¼ nak > Km
 - GkdNt 3

4- GakascrN_

- RBl anynphatFakCati
 - xat 3 4c
 - smtPaBctict 3 ATR72, AN24, Y12, Y7, C130

5- FarasaRsp

- RbBnFarasaRsp 3 134 kEng
- I TPaBersackSB 3 4894 ht
- kújenalRsuvsSa 3 28007 ht
- RstR)atj 3 20933 ht
- sanlybthTik 3 4kEng

X- visyevakmp

1- GbrM

- chhsal amFúmskSa 3 30 chhsiss³ 22261 nak;

2- Tikmnakmn_

- bNbj bBadiSij al; 3 kabGdTic Microwave
- RbBnTisBGC1 3 MPTC, CAMINTEL
- tMl esvaTisBkúRsk 3 1 esn- 10 esn du ¼ naTI
- RbBnTisBGC1 3 CAMSHIN, MOBITEL, CASACOM
- tMl esvaTisBkúRsk 3 4 esn- 11 esn du ¼ naTI

- RskkmanesvaTts	3		
. CAMSHIN	3	Rskk	brbUN_kgRtLac rI aeb
. CASACOM	3	Rskk	brbUN_kgRtLac rI aeb
. MOBITEL	3	Rskk	brbUN_kgRtLac
. tll esvaTts	3	80 esn-	180esn du a/haTl
3- swaPi)al ³			
. mnpeBTubEgktamext p	3	2	
. chhERK	3	215	
. smtPaBBia)al ³			
- CPA1	:	1	
- CPA 3	:	1	
g- visyeTscrN_			
1- rmNlydnRovtIsaRsp	3	vtRtELgEkg R)asaTkGRBH R)asaTBNHay	
2- rmNlydnFmCati	3	Phab)at Pnt Pnkajdmas vtBBHFatu vPMSBF	
3- sNakar ³			
. chhsNakar	3	1	chhbrb ³ 20
4- p#sINak; ³			
. chhphsINak;	3	9	chhbrb ³ 105
c- FnFanFmCati			
1- FnFanEr:			
. dhdæ	3	GNjRsl Pthertak	
. flkanlt	3	stya(**)	
2- CtkstERB			
. »ra:l	3	253>700ht -épRkLaenHKitsrtoTajCtkstERB»ral	
			Edl sllk gextkRgsBaFisat;
3- tldnerR)aseRchYag			
. Tensab	3	316>250ht -épRkLaenHKitsrtoTajtldnerR)aseRch	
			YagTensabEdl sllk gextkRgF Mesomrab)atdlkg
			nigeBaFisat;
q- visy sknBI nigGaTPaBsMmbkarGPivDineBI GnaKt ³			
1- GPivDinRBI anynphal			
2- varlvb, kmj			
3- ksi]sSah kmj			
4- kskmj-dlNahhpSMdINal]sSah kmj			
5- GPivDin]sSah kmjät tt-mFüm l Tö l Bdlndat			

-1 | EksarRksGmhaépraM 998
-2 | esovePASical2003
-3 | rJaykarNRksGmhaépraM 2004
(**) tldnerR)anpl Sm, Tan

kBgsW

k- BtmanTETA

1 - Trhextp	3	kBgsW
2 - épKLaextp	3	7017 Km ²
3 - sNædl	3	tInPikgrab nigval TMab
4 - GakasFatu	3	Gtbrma 32 °C Gb,brma 24 °C
5 - cMhRbCaCnsrb ⁻¹	3	
• qam 998	3	598-880 nak;
•)anspncam 2010	3	851-000 nak;
• RbCaCn 18 qam Lg ⁻²	3	362-407 nak;
- kigenaRsl	3	192-955 nak;
- Rbis	3	169-452 nak;
6 - dgsbt	3	85 nak/4km ²
7 - cMhRsk ⁻²	3	8
8 - cMhXM ⁻²	3	87
9 - cMhPthi ⁻²	3	1-317
10 - RBRbTI ;	3	xagektCabext tta kv nigextk Npl
	3	xag l icCabext tka tkw
	3	xageCbCabext tBaFisat; nigextk g qam
	3	xagt, l Cabext k t nigext tta kv
11 - CnCatPaktic	3	sly
12 - brmaNTikePog -Kit CamFum;	3	1-2045 mm ¼ qam

x- visy/kskmp

1 - dNalsU	3	110-000 ht
Tnp l	3	1/8 t/ht
2 - dNallsSahkmp	3	3-850 ht
kigenahman ³ -sENkd	3	500 ht
3 - cMarEp eQl	3	3-645 ht
4 - dNallhpsM	3	3-800 ht
kigenahman ³ -eBat	3	903 ht
- sENk)ay	3	950 ht
5 - bsstVqam 2003		
• srbKa-Rkbl	3	333-655
• karcBamstCal kN ³ ksidan		
- srbRCK	3	124-314
- srbstVab	3	1-348-221

K- visyehdarcnasms

1 - saFarNkar		
• puCatBPBj eTATrhextp	3	48Km

- kM Natpú Catkú ext p 3
- pú Catel x 3 3 32/00 Km
- pú Catel x 4 3 77/37 Km
- pú Catel x 5 3 1/15 Km
- pú Catel x 44 3 43/660 Km
- pú Catel x 46 3 28/00 Km
- pú Catel x 51 3 44/70 Km

2 - famBI - Tiksit

- famBI GKÍsnl 3 bNúj GKÍsnl Pab Camly RkgP Búj
- Tiksit
 - GanPaBtMlg 3 3500 m³ ¼ é fú
 - GanPaBpl it 3 2000 m³ ¼ é fú
 - tMl 3 1500 erol ¼ m³
- var GKÍsnl³ {skpBI}
 - skpBI
 - clay BIT hext p 3 100 Km
 - kM ad 3 4 MW

3 - FarasaRsp

- RbBú Farasa[®]Sp 3 107 kEng
- ITPaBersackSB 3 23840 ht
- kúenatRsuvsSa 3 20613 ht
- RstR) ad 3 3232 ht
- sanlybthTik 3 5kEng

X- viskvesvakmp

1 - GbrM

- chhsal amFúmskSa 3 38 chhsis³ 29284 nak;

2 - Tikmnakmn

- bNúj bBúsljal; 3 Microwave
- RbBúTisBúcl 3 CAMINTEL
- tMl esvaTis BúgRsk 3 1 esn- 10 esn du ¼ naTl
- RbBúTisBúcl 3 CAMSHIN, MOBITEL, CASACOM
- tMl esvaTis BúgRsk 3 4 esn- 11 esn du ¼ naTl
- RskmanesvaTis Bú 3
- . CAMSHIN 3 RsksbtagTg; KgbisI Púst] tly c,armn
- . CASACOM 3 RsksbtagTg; KgbisI Púst] tly c,armn
- . MOBITEL 3 Rsk] tly c,armn KgbisI
- tMl esvaTis BúTackARbetS 3 80 esn- 180 esn du ¼ naTl

3 - swaP)al

- mnpeBtúbEgktamext p 3 3
- chMERK 3 314
- smtPaBBüa)al

extkBgFM

k- BtmanTØTA		
1- Thhextp	3	kBgFM
2- épPkLaextp ⁻¹	3	13814 Km ²
3- sNandl	3	tln; icTik tlnval rab tlnRBPWtlnxgrab
4- GakasFatu	3	Gtbrma 34 °c Gb,brma 21/3 °c
5- cMhRbCaCnsrb ⁻²ⁱ	3	
• qam1998	3	569060 nak;
•)anspnqam2010	3	784000 nak;
• RbCaCn18qamLg ⁻³ⁱ	3	322>301 nak;
- kigenalRsl	3	172>375 nak;
- Rbis	3	149>226 nak;
6- dgsbt	3	41 nak/4Km ²
7- cMhRsk ⁻²ⁱ	3	8
8- cMhXM ⁻²ⁱ	3	81
9- cMhPthi ⁻²ⁱ	3	737
10- RBbTl ;	3	xagektCabextPkceH nigextpsgRtg
	3	xagl icCabTensab nigextpsomrab
	3	xageCgCabextPBHnar
	3	xagt,lgCabextkBgqad nigextkBgcam
11- CnCatPaktic	3	kly
12- brimaNTikePog -KitCamFüm ;	3	1>499/4 mm ¼ qam
x- vislykskmp		
1- dNalRSU	3	128>13 ht
Trip l	3	1/39 t/4ht
2- dNalJlSsahkmp	3	11>71 ht
• kigenalman ³⁻ sENkesog	3	2>78 ht
- l q	3	1>19 ht
- slhycnb	3	6>371 ht
3- cMarEpøQl	3	1>576 ht
4- dNalHpsM	3	6>433 ht
• kigenalman ³⁻ eBat	3	985 ht
- sEN(k)ay	3	1>506 ht
5- Cl pl		
• pl ensaTTiksab	3	6>800 t
• varlvb, kmTiksab		

- RtlSac;	3	2200 t
- RkeBl	3	2820 k,al
6- bsstVqil2003		
• srbeKa-Rkbl	3	252-281 k,al
• karcBamstCal kN ³ ksidan		
- srbrCKk	3	83-105 k,al
- srbrstKsab	3	604-808 k,al

K- visyehdarcnasms

1- saFarNkar		
• puCatBPBj eTATrhextp	3	168 Km
• kN ³ NatpuCatkgextp	3	
- puCatel x 6	3	141/43 Km
- puCatel x 62	3	36/16 Km
- puCatel x 72	3	15/42 Km
• tM dlkCBdeTAPBj	3	10000 erol 1/4mak;
2- famBl -Tksit		
• famBl GKIsnl		
- GanPaBtMlg	3	3500 KVA
- GanPaBpl it	3	2000 KVA
- tM	3	1100erol 1/4Kwh
• Tksit		
- smtPaBpl it	3	2600 m ³ 1/4ef
- brmaNpl it)an	3	400 m ³ 1/4ef
- tM	3	900-1300 erol 1/4m ³
• varGKIsnl ³ {skpBl }		
- slyChit		
ctJayBTRhextp	3	75 Km
kM atj	3	5 MW
- slyEsn		
ctJayBTRhextp	3	95 Km
kM atj	3	40 MW
- slyesbg		
ctJayBTRhextp	3	50 Km
kM atj	3	4 MW
- slyCERkg		
ctJayBTRhextp	3	100 Km
kM atj	3	1 MW

- chhNak 3 4 chhbrb³148
- 4- p#hNak³
- chhphNak 3 8 chhbrb³116

c- FnFanFmCati

1 - FnFanEr:

- dNdæ 3 R)asaTGEN jt
- Ermas 3 Pm (**) Rkva:

2 - CksterB

- bgeBr 3 242-500ht -épRkLaenHKitsrtoTajCksterBbgeBr
Edl sRk gextpRBvihar extpsomrab !

3 - tlnRbR)aseRchyaq

- Tensab 3 316-250ht -épRkLaenHKitsrtoTajtlnRbR)aseRchyaq
Tensab Edl sRk gextpBgqaj extpsomrab extpatdkg>
ngextpBaFisat !

q- viskpnBl nigGaTPaBsmkarGPvDineBl GnaKt ³

- 1 - esvabteTscrN_
- 2 -]TuanCatbgeBr
- 3 - varvb, kmp
- 4 - eFGaClvkmfnFanEr:
- 5 - kskmp-dlnRksU!
- 6 - tlnClvclbgeTenqpr -CksterSab !

-1 | EksarRksghmhaeplal 998
 -2 | esovePASfpa 2003
 -3 | r)aykarNRksghmhaeplal 2004
 (**) tlnEdl)anpl sm, Tan

- srbKa-Rkbl 3 221-823 k,al
- karcBa†stCal kN³ksidæ
 - srbRCK 3 182-096 k,al
 - srbstVab 3 1-143-985 k,al
 - varlvb, kmj 3 datsaraysmIT 600 t

K- visyehdarcnasms

1 - saFarNkar

- púCatBPBj eTATrhextp 3 148 Km
- púEdkBPBj eTATrhextp 3 166 Km
- kllNatpúCatkjextp³
 - púCatel x 3 3 84/01 Km
 - púCatel x 31 3 57 Km
 - púCatel x 32 3 33/5 Km
 - púCatel x 33 3 51/65 Km

2 - famBI - Tiksit

- famBI GKIsnl
 - GanPaBtll g 3 1-200 KVA
 - GanPaBpl it 3 870 KVA
 - tll 3 1-200 erol ¼ Kwh
- Tiksit
 - smtPaBpl it 3 5-760 m³ ¼ef¶
 - brimaNpl it)an 3 2-800 m³ ¼ef¶
 - tll 3 1-200 erol ¼m³

• varGKIsnl³ {SkpBI }

- klday ^(P) 3 F/S, P, I
- ctJayBITrhextp 3 15 Km
- kll alj 3 180 MW
-)an,spntll Klrag 3 250 MSUS
- xgrabbkeKak
 - ctJayBITrhextp 3 40 Km
 - kll alj 3 24 MW
- GRTt av
 - ctJayBITrhextp 3 14 Km
 - kll alj 3 1 MW

3 - kardkCBad

- tll dkCBad 3
- púEdk 3
- >Thij 3 77 erol ¼etan>Km

	3	45 erol ¼ nak>Km
- pñTik	3	GacokCBat tam sm&TeTARKgRBHSInn unigevot Nam
4- FarasaRsp	3	
• RbBñFarasa®Sp	3	75 kEng
• ITPaBksacsRB	3	69>707 ht
- kñendRslvsa	3	56/57 ht
- RstR)adj	3	13>37 ht
• sanlybñTik	3	4 kEng

X- visyevakmp

1- GbrM		
• chhmvavTual yÉkCn	3	2 chhsisS ³ 354 nak;
• chhsal amFúmskSa	3	44 chhsisS ³ 33>366 nak;
2- TñKmnakmn_		
• bNbj bBñSij al ;	3	Microwave
• RbBñTis BGC l ½	3	CAMINTEL
- tñl esvaTis BñgRsk	3	1 esn- 10 esn du ñ/ñaTI
• RbBñTis Bñ l ½	3	CAMSHIN, MOBITEL, CASACOM
- tñl esvaTis BñgRsk	3	4 esn- 11 esn du ñ/ñaTI
- RskmanesvaTis Bñ	3	
. CAMSHIN	3	Rskkñg)ay bñaymas Qk
. CASACOM	3	RskdgTg; Qk
. MOBITEL	3	Rskkñg)rtac kñg)ay kñt Qk
• tñl esvaTis BñTARkeTis	3	80 esn- 180 esn du ñ/ñaTI
3- sñkaP)al		
• mnpeBTübEgktamext p	3	4
• chhERK	3	335
• smtPaBñia)al		
- CPA 2	:	3
- CPA 3	:	1

g- visyeTscrN_

1- rmNlydnRovtIsaRsp	3	R)asaTPñQk vtñt R)asaTPñüg PññgRtac
2- rmNlydnFmCati	3	TkQU EkbfjPññkka Pññg ERBkGBñl
3- sNakar ³		
• chhsNakar	3	3 chhbrñ ³ 117
4- pñsñNak; ³		
• chhpñsñNak;	3	12 chhbrñ ³ 151

c- FnFanFmCati

1 - FnFanEr:

- fkb)ar 3 kbt1 (**) kbt2(*) Tkmassxagl ic(**)
Tkmassxagekt (**)
- ErRkaPtt 3 Pthisa ekahsa Pmakxb
- Ermas 3 Pmk
- ErEdk 3 kbt
- Erp)st 3 Pmtg(**) Pmrg:(**) Pmak:(**) Pm)g (*)

2 -] TuanCati

- P)kka 3 140-000 ht -épRkLaenHKitsrbTad] TuanCatP)kka
Edl s)k)ext)k)gsWext)k)k) Rk)RBHshnd
- Ekb 3 5000 ht -épRkLaenHKitsrbTad] TuanCatEkbEdl
s)k)Rk)Ekb!

q- vis)sk)pnBI nigGaTPaBS)mbkarGPivDineBI GnaKt 3

- 1 - kskmj-d)N)thp)M) ermc eBat>>|
- 2 - RbB)zarasa)Sp
- 3 - eTscrN)FmCati
- 4 - GPivD)nt)neon
- 5 - p)kmnaKmn_
- 6 - eFGaC)k)FnFanEr:

-1 | ÉksarRks)gmhaé)pn)M) 998
 -2 | esovePAS)ical)2003
 -3 | r)aykarNRks)gmhaé)pn)M) 2004
 (P) K)ragGaTPaB
 (*) t)h)sk)S)ars)k)aveRkam MOU (**) t)h)Edl))anp))sm, Tan
 F/S: K)rag)k)S)asmit) TPaB P: famBI I: kare)S)ack)SB

extkNhl

k- BtmanTØTA		
6- THnextp	3	taexA
1- épRkLaextp ⁻¹	3	3.568 Km ²
2- sNændl	3	tðndllabTenæmKgÁ
3- GakasFatu	3	Gtbrma ³ 32.8 °C Gb,brma ³ 23 °C
4- cMhRbCaCnsrb ⁻²	3	
• qáll998	3	1.075.113 nak;
•)anspncá2010	3	1.445.000 nak;
• RbCaCn18qállLg ⁻³	3	662.734 nak;
- kügenalRsl	3	361.142 nak;
- Rbbs	3	301.592 nak;
5- dqsbt	3	301 nak/4Km ²
6- cMhRsk ⁻³	3	11
7- cMhXM ⁻³	3	147
8- cMhPthi ⁻³	3	1.087
9- RBNoTI ;	3	xagektCabextkRBEvg
	3	xagl icCabextkBgswngexttatakv
	3	xageCbCabextkBgqatj nigextkBgcam
	3	xagt,lgCabRbetsevtNam
10- RckGrpCati	3	khsMnr
11- Rcktbln;	3	RCFMxartaldjyU
12- brmaNTikePog -KitCamFüm!	3	1.186/9 mm ¼qáll
x- viskykskmpj		
1- dMNaRtSU	3	94.866 ht
Trip l	3	3/31 t¼ht
2- dMNaRtSsahkmpj	3	4.073 ht
• kügenalman ³ - sENkcdl	3	1.700 ht
- GMBÁ	3	1.500 ht
- l¶	3	873ht
3- cMarEpøQl	3	13.515 ht
4- dMNaRtHpsM	3	22.871 ht
• kügenalman ³ - eBat	3	14.044 ht
- sENk)ay	3	3.754 ht
5- Cl pl		
• pl ensaTtkSab	3	17.897 t
• varlvb, kmTtkSab		
- RtIsac;	3	3.035 t
- RkeBl	3	7.072 k,al
• pl ensaTnacj	3	500 t
6- bsstlvqáll2003		

- sribeka-Rkbl 3 158-721 k,al
- karcBamstCal kN³ksidan
- sribRCK 3 158-855 k,al
- sribstSab 3 1034273 k,al

K- visyehdarcnasm³

1- saFarNkar

- pūCatBPBJ eTATInextp 3 11 Km
- kN³NatpūCatK³extp 3
- pūCatel x 1 3 52/51 Km
- pūCatel x 2 3 21/4 Km
- pūCatel x 3 3 11/85 Km
- pūCatel x 4 3 17/4 Km
- pūCatel x 5 3 21/19 Km
- pūCatel x 6 Ga 3 29/17 Km
- pūCatel x 8 3 21/73 Km
- pūCatel x 21 Ga 3 60/10 Km
- pūCatel x 21 eb 3 20 Km
- pūCatel x 42 3 24/15 Km
- pūCatel x 51 3 38/51 Km
- pūCatel x 61 3 4 Km

2- famBI -Tksit

- famBI GK³snl 3 bN³aj GK³snl PabCamYRkgP BJ
- Tksit
- smtPaBpl it 3 2400 m³ 1/4 m³
- brimaNpl it)an 3 1500 m³ 1/4 m³
- tūll 3 900 erol 1/4 m³

3- kardkCBaū

- SaLaq 3
- ERBkkpm 3 1eRkOgcN³150 etan
- ERBktamak; 3 1eRkOgcN³150 etan 1eRkOgcN³150 etan

4- FarasaRsp

- RbBn³FarasaRsp 3 252 kEng
- I TPaBeksacsB 3 68-927 ht
- k³genatRsuvsSa 3 23-368 ht
- RSR)atj 3 45-559 ht
- s³nyb³thTik 3 7 kEng

X- visyevakmp

1- Gbrū

- c³h³sal amFūmskSa 3 61 c³h³sisS³ 57-359 nak;

2- Tūkmnakm³

- bN³aj bB³sljal; 3 Microwave
- RbBn³ts BGC l 1/2 3 MPTC, CAMINTEL, CAMSHIN

- tēl esvaTūs Bk gRsk	3	1 esn- 10 esndu a/naTl
• RbBvTūs Bk l ½	3	CAMSHIN, MOBITEL, CASACOM
- tēl esvaTūs Bk gRsk	3	4 esn- 11 esndu a/naTl
- RskmanesvaTūs Bk	3	
. CAMSHIN	3	RskGgšū s'lg ekahFMmxxkBU taexā kNpā s'lg el kEdk ekonsl'y Bj aBā
. CASACOM	3	RskGgšū s'lg ekahFMmxxkBU taexā ekonsl'y Bj aBā
. MOBITEL	3	RskGgšū s'lg ekahFMtaexā el kEdk ekonsl'y Bj aBā
• tēl esvaTūs Bk TAerKARbeTs	3	80 esn- 180 esndu a/naTl
3- s'wāP)al ³		
• mnheB TūEgktamext p	3	5
• chMERK	3	530
• smtPāBBū)al ³		
- CPA 1	:	1
- CPA 2	:	2
- CPA 3	:	3
g- v'skyeTscrN_		
1- rmNlydnRvvt'saRsp	3	vtGofCy PNBraCRTBū P)asit> vtRBhv'arsk vtRBHFatu
2- rmNlydnFmCati	3	P)nmnp ekahdac; P)lgP)l P)MBk
3- p)S)Nak; ³		
• chhp)S)Nak;	3	26 chhbrb; ³ 144
c- FnFanFmCati		
1- FnFanEr:		
• Ermlū bEdn	3	P)asit (***)
q- v'sky skp)B l nigGaTPaBS)mbkarGPivD)ngB l GnaKt ³		
1- kskmp-d)N)h)P)S) d)N)R)S)U>>		
2- RbBvTūs arasaRsp		
3-]s)ahkmGtB l kmp		
4- esvab)teTscrN_		
5- varlvb, kmp		

-1 | ĒksarRks)gmhāep)l)M 998
-2 | esoveP)asit)l)M 2003
-3 | r)aykarNRks)gmhāep)l)M 2004
(***) t)l)h)amXat;

extþkalhg

k- BtmanTØTA

1 - Trhextp	3	ekalhg
2 - épRkLaextp ⁻¹	3	11>160 Km ²
3 - sNandl	3	tØnPMCabegismØT
4 - GakasFatu	3	Gtbrma 32/3 °c Gb,brima 24 °c
5 - chlRbCaCnsrb ⁻²	3	
• qam 998	3	132>100 nak;
•)anspncal2010	3	249>000 nak;
• RbCaCn18qamLg ⁻³	3	70>05 nak;
- kjenalRsl	3	35>241 nak;
- Rbis	3	35>364 nak;
6 - dgsbt	3	12 nak/4Km ²
7 - chlRsk ⁻³	3	8
8 - chlXm ⁻³	3	33
9 - chlPthi ⁻³	3	122
10 - RBRbTI ;	3	xagektCabextkBgsw
	3	xaglicCabRbeTsef
	3	xageCgCabextpBaFisat;
	3	xagt,lgCabRkgRBHshnunigextkØt
11 - RckGrpCati	3	calyam Ekvpis
12 - RcktØn;	3	KivgS spcmanCly bUmsarkr ERsGbil
13 - brimaNTikePög -KitCamFüm!	3	3>500/9 mm ¼ qam

x- viskykskmp

1 - chlNalsU	3	7>355 ht
Trip l	3	1/58 t/4ht
2 - chlNallsSahkmp	3	905 ht
3 - chlMarEpØQl	3	1>587 ht
4 - chlNalhpSM	3	565 ht
5 - Cl pl		
• pl ensaTTiksmTP	3	18>300 t
• varlvb, kmpTiksmTP	3	350 t
• pl ensaTnalcj	3	17>464 t
6 - bsstlvqal2003		
• srbeKa-Rkbl	3	13>023 k,al
• karcBamstCal kN ³ ksdan		

- srbrck	3	10843 k,al
- srbrstlab	3	7467 k,al

K- vishdarcnasm

1 - saFarNkar³

• pūCatBPBJ eTATrhextp	3	294 Km
• kINatpūCatkūextp		
- pūCatēl x 4	3	49/55 Km
- pūCatēl x 48	3	162 Km

2 - famBI - Tiksit

• famBI GKsni	3	cmGKsntPaBRbetS ef
- GanPaBtMlg	3	2000 KVA
- GanPaBplit	3	1800 KVA
- tēl	3	550 erol ¼ Kwh

• Tiksit		
- smtPaBplit	3	3000 m ³ ¼ erol
- brimaNplit)an	3	150 m ³ ¼ erol
- tēl	3	1800 erol ¼ m ³

• varGKsni³ {skānBI }

- KhrmūTB ^(P)	3	D/S, P
clāyBITPBJ	3	150 Km
kW abj	3	13 MW
)anspntāll Kūrag	3	29 M\$US
- SūbS SRM Npl ^(P)	3	D/S, P
clāyBITrhextp	3	50 Km
kW abj	3	125 MW
)anspntāll Kūrag	3	275 M\$US
- SūbS SRM kam ^(P)	3	D/S, P
clāyBITrhextp	3	25 Km
kW abj	3	125 MW
)anspntāll Kūrag	3	130 M\$US
- SūbCayGaErg ^(P)	3	D/S, P
clāyBITrhextp	3	55 Km
kW abj	3	260 MW
)anspntāll Kūrag	3	502 M\$US
- Sūbtaēt ^(P)	3	D/S, P
clāyBITrhextp	3	50 Km
kW abj	3	80 MW

)anspntll KMag	3	215 M\$US
- Stgem Tik T1		
ctJay BIT rhex tp	3	55 Km
kW abj	3	175 MW
- Stgem Tik T2		
ctJay BIT rhex tp	3	40 Km
kW abj	3	210 MW
- Stgem Tik T3		
ctJay BIT rhex tp	3	20 Km
kW abj	3	50 MW
- Stg Ekb T1		
ctJay BIT rhex tp	3	12 Km
kW abj	3	4 MW
- Stg Ekb T2		
ctJay BIT rhex tp	3	25 Km
kW abj	3	26 MW
- Stg GIsa		
ctJay BIT rhex tp	3	130 Km
kW abj	3	2 MW
- Kttmü T2		
ctJay BIT rhex tp	3	150 Km
kW abj	3	1 MW
3- kardik CBati		
• saLag	3	RS GMil ERBkGNjg Tik Rt Balyrg Pthidg -man KMag sagsgsanen AbNpcNcxagel I;
• kBgEp	3	
- kBgEpEkvps	3	kBgEpGrpCati
CMATik stlabkarcl ct	3	5m
sm tpPaXadjskTmij	3	36.000 m ²
TmWll ansjkkgETnW	3	200.000 m ²
manKMagBRgkbEnfn	3	Jetty RbEvg 200m nigman CMATik 7m>
- kBgEpERSGMil	3	CaEpRckeTPaKl
CMATik	3	2-4m
sm tpPaXadjskTmij	3	2.000 m ²
4- Gak ascrN_		
• RBl anynphaHfakCati		
- xät	3	3 C
- RbePTynphaHclct	3	ATR72, AN24, Y12, Y7

- smtPaBTTY GkdMNF	3	120 000 nak; 1/4 ml
5- FarasaRsp	3	
• RbBrFarasaRsp	3	13 keng
• I TPaBersacRsb	3	5307 ht
- kjenalRsuvsSa	3	5307 ht

X- viskyesvakmp

1- GbrM		
• chhsal amF ümskSa	3	11 chhsis ³ 3984 nak;
2- Ttkmnakmn_		
• bNaj bBaRsljal ;	3	Microwave
RbBrTdsRscI %	3	CAMINTEL -Tthex tbnigERSGMil ;
- tll esvaTds RkjRsk	3	1 esn- 10 esn du a/naTI
• RbBrTdsRsl %	3	CAMSHIN, MOBITEL, CASACOM
- tll esvaTds RkjRsk	3	4 esn- 11 esn du a/naTI
- RskmanesvaTdsRb	3	
. CAMSHIN	3	RskmNØ sha kØgsil a spcmanCly KhsaKr
. CASACOM	3	RskmNØ sha ERSGMil bTmsaKr KhsaKr
. MOBITEL	3	Rskkealkg ERSGMil
• tll esvaTds RbTAerkaRbeTs	3	80 esn- 180 esn du a/naTI
3- swaPjal		
• mnheBTubEgktamextp	3	2
• chhERK	3	37
• smtPaBBüa)al		
- CPA1	:	1
- CPA 3	:	1

g- viskyeTscrN_

1- rmNlycaFmCati	3	TikFakk,al qayekate)a: TikFaktaéteI I-taéteRkam emil páfpaekalkgerka k,al qayGW1 ekahEsp
2- tllneqñ	3	eqñcalyam eqñekahml eqñiyayEsn espKhsaKr ByCb m ekalkgerka ERBkekate)a:
3- sNakar	3	
• chhsNakar	3	4 chhbrb; ³ 87
4- p#sNak;	3	
• chhp#sNak;	3	14 chhbrb; ³ 213

c- FnFanFmCati

1- FnFanEr:

• xSacs	3	RseLA (**), PthRkeBl (**), fng (**), erCaystly (**), slg fji (**), Bamradj (**), Ekvps (**), EqBis3 (**), GayEsn (**)
2-] TuanCati		
• xgrabKhrmü	3	35000 ht -ép RkLaenHKitsrbTadj] TuanCati xgrabKhrmü Edl sll kú extk BgsW
• bTmsaKr	3	171>250 ht
• PmkeKa	3	140000 ht -ép RkLaenHKitsrbTadj] TuanCatPmkeKa Edl sll kú extk Bt extk BgsWRkqRBHshnj
3- EdnChkstúRB		
• Pmkk	3	333750 ht -ép RkLaenHKitsrbTadjChkstúRB Pmkk Edl sll kú extk BaFsat; extk at dldg!
• BamRkesab	3	23>750 ht
4- tñnerbR)aseRchyg		
• dgEBg	3	27>700 ht

q- vis/skpnBl nigGaTPaBSMbkarGPvDfneBl GnaKt

1- KragGPvDfntñkatñRBdnkm&a-éf

2- tñn]sSahkmp

3- varGKsni

4- eTscrNFmcati

5- GPvDfntñneqñ

- 1- EksarRksghæpñM 998
- 2- esovePASññ 2003
- 3- r)aykarNRksghæpññ 2004
- (P) KragGaTPaB
- D/S: KragSkSatamRTsp P: famBl
- (**) tññedl)anpñ sm,Tan

ext Rkech

k- BtmanTETA

1 - THhex tp	3	Rkech
2 - épRkLaex tp ⁻¹	3	11.094 Km ²
3 - sNandl	3	xgrab val TTab
4 - GakasFatu	3	Gtbrma 32/9 °C Gb, brma 22/5 °C
5 - chhRbCaCnsrb ⁻²	3	
• qāM 998	3	263.170 nak;
•)anspncāM 2010	3	383.000 nak;
• RbCaCn 18 qāM Lg ⁻³	3	150.970 nak;
- kigenahRsi	3	78.808 nak;
- Rbis	3	72.162 nak;
6 - dgsbt	3	24 nak/4km ²
7 - chhRsk ⁻³	3	5
8 - chhXM ⁻³	3	46
9 - chhPthi ⁻³	3	250
10 - RBRbTI ;	3	xagektCabextpN# KH
	3	xagIcCabextkBgFM
	3	xageCbCabextlsjERTg
	3	xagt,lgCabextkBgcam nigRbeTsevoT Nam
11 - Rcktdln;	3	Cy X ad
12 - brmaN TikePog -Kit CamFüm ;	3	1.644/5 mm ¼ qāM

x- viskykskmp

1 - dNalSU	3	35546 ht
Thp I	3	2/21 t¼ht
2 - dNalSsahkmp	3	9613 ht
• kigenahman ³ - ekASU	3	2934 ht
>Thp I	3	0/81 t¼ht
- I q	3	2936 ht
- slhycnb	3	2377 ht
3 - cMarEp øQI	3	1021 ht
4 - dNalThpSM	3	2255 ht
• kigenahman ³ - eBat	3	1519 ht
5 - Cl pl		
• pl ensaTTksab	3	2620 t
• varlvb, kmTksabRtsac;	3	120 t
6 - bsistVqāM 2003		
• srbeKa-Rkbl	3	113.065 k, al

- karcBa³stCal kN³ksidan
- srbRCK 3 88>385 k,al
- srbstVab 3 359>182 k,al

K- visyehdarncasm³

1- saFarNkar

- p³CatBP³Bj eTAT³hex³tp 3 340 Km
- p³Tik 3 220 Km
- k³Natp³Cat³g³ex³tp
 - p³Cat³l x 7 3 211/29 Km
 - p³Cat³l x 73 3 7/77 Km
 - p³Cat³l x 74 3 17/82 Km
 - p³Cat³l x 76 3 52/54 Km
- t³ll dkCB³dp³ekakeTAP³Bj 3 18>000 1/4mk;

2- famBI - Tiksit

- famBI GK³snl
 - GanPaBt³ll g 3 2>290 KVA
 - GanPaBp³l it 3 1>570 KVA
 - t³ll 3 1>600 erol 1/4Kwh
- Tiksit
 - smtPaBp³l it 3 1>900 m³ 1/4ef³
 - brimaNp³l it)an 3 1>200 m³ 1/4ef³
 - t³ll 3 900 erol 1/4 m³
- varGK³snl³ {sk³anBI }
 - s³ll^(P) 3 D/S, P, I
 - cl³ayBIT³hex³tp 3 40 Km-50 Km
 - k³ll al³ 3 467 MW - 3>300 MW
 -)n³sant³ll KMag 3 700 m\$US - 3>940 m\$US
 - ERBk³q³T1
 - cl³ayBIT³hex³tp 3 120 Km
 - k³ll al³ 3 7 MW
 - ERBk³q³T2
 - cl³ayBIT³hex³tp 3 60 Km
 - k³ll al³ 3 24 MW
 - ERBkeTr³T1
 - cl³ayBIT³hex³tp 3 75Km
 - k³ll al³ 3 7 MW
 - ERBkeTr³T2
 - cl³ayBIT³hex³tp 3 50 Km
 - k³ll al³ 3 10 MW
 - ERBkeTr³T3

cljyBITrhextp	3	25 Km
kW alj	3	13 MW
- ERBkkaBT11		
cljyBITrhextp	3	60 Km
kW alj	3	2 MW
- ERBkkaBT12		
cljyBITrhextp	3	40 Km
kW alj	3	6 MW
- ERBkerKogT1		
cljyBITrhextp	3	75 Km
kW alj	3	8 MW
- ERBkerKogT2		
cljyBITrhextp	3	50 Km
kW alj	3	6 MW
3- kardkCBah		
• tll dkCBah		
- pteKak	3	18000 erol ¼nak;
- pTik	3	
4- FarasaRsp		
• RbBnFarasa®Sp	3	169 kEng
• I TPaBersackSB	3	9235 ht
- kjenalRSUvsSa	3	4250 ht
- RstR)alj	3	4985 ht
• sanlybthTik	3	1 kEng
X- visyesvakmp		
1- GbrM		
• chhsal amF iusksa	3	28 chhsis ³ 11876 nak;
2- Ttkmnakmn ³		
• bNbj bBslj al ;	3	Microwave payrNb
• RbBnTis BScI ½	3	CAMINTEL
- tll esvaTis BkRsk	3	1 esn- 10 esn du a/naTI
• RbBnTis Bcl ½	3	CAMSHIN, MOBITEL, CASACOM
- tll esvaTis BkRsk	3	4 esn- 11 esn du a/naTI
- RskmanesvaTis Bp	3	
• CAMSHIN	3	RskRkech
• CASACOM	3	RskRkech
• MOBITEL	3	RskRkech qly sÜ
• tll esvaTis BTAerKARbeTs	3	80 esn- 180 esn du a/naTI
3- sxaP)al ³		
• mnheBTübEgktamextp	3	2

- chMERK 3 226
- SmtPaB(üa)al 3
- CPA 2 : 1
- CPA 3 : 1

g- visyeTscrN_

- 1- rmNlydaRvvtIsaRsp 3 Pstlk vtssr100 vtpharLav vtphareKak
vtphakNal
- 2- rmNlydaFmCati 3 PstBNkaLi kaBl eRCayér ERBk eRCmaty GngjepSat
éRBKkt PRBH
- 3- sNakar 3 4 chhbnb;³ 106
- chhsNakar
- 4- p#sNak;³ 3 13 chhbnb;³ 220
- chhp#sNak;

c- FnFanFmCati 3

- 1- FnFanEr: 3
- ErsN - TgEdg- sgsl 3 Gbvkxk; (**) Rkltqpr
- fRkanlt 3 stlyRCH
- Ermas 3 GkRtú (**) stlyRCH (**) ERscar (**)
- ErFügFü 3 rBlk
- 2- ChkstÉR 3
- st 3 75000 ht -épRkLaenHKitsrtoTajChkstÉRBSú
Edl stlkjextpNú KH

q- visy skpnBl nigGaTPaBSmbkarGPvDineBl GnaKt 3

- 1- kskmj-dNalmpSM
- 2- ksi-]sSahkmj
- 3- eFGaCl/kmjFnFanEr:
- 4- varGKsni
- 5- esvabteTscrN_

-1 | ÉksarRksymháepalM 998
 -2 | esovePASfical2003
 -3 | r)aykarNRksymháepal2004
 (P) KragGaTPaB
 (**) tbnEdl)andl sm.Tan
 D/S: KragSkSatamRTsb P: famBl I: karelsacRSB

extmN KH

k- BtmanTtTA		
1 - Thnextp	3	Esnmenarmü
2 - épRkLaextp ⁻¹	3	14>88 Km ²
3 - sNandl	3	tlnxgrab manl kN ³ CadRkhm-exñigval esñ
4 - GakasFatu	3	Bllanmansñly] tñym nig] bkrN_
5 - chñRbCaCnsrb ⁻²	3	
• qññ 998	3	32>400 nak;
•)anspnqññ2010	3	53>000 nak;
6 - dgsbt	3	2 nak/Km ²
7 - chñRsk ⁻³	3	5
8 - chñXM ⁻³	3	21
9 - chñPthi ⁻³	3	92
10 - RBRbTI ;	3	xagekit CabRbeTsevt Nam
	3	xag] icCabext] kkech
	3	xageCbCabext] rñnKH nigext] sñ] ERTg
	3	xagt,] CabRbeTsevt Nam
11 - CnCatPaKtic	3	12 CnCati
12 - Rcktln;	3	La)aex
13 - RckeTPaKl	3	dakdaM
14 - brimaN TikePog -KitCamFüm ;	3	2>450 mm ¼qññ
x- vis] kskmp		
1 - dñNalRSU	3	13>454 ht
Tñp l	3	1/94 tñ/ht
2 - dñNalRSahkmp	3	963 ht
3 - cMarEp eOl	3	775 ht
4 - dñNalñpSM	3	1>124 ht
5 - bsstVqññ2003		
• srñbeKa-Rkbl	3	28>407 k,al
• karcBañstñCal kñ ³ ksidan		
- srñRCK	3	8>143 k,al
- srñstñsab	3	31>103 k,al
- dññ	3	74 k,al

K- vis] ehdarcnasmñ

1 - saFarNkar

- púCatBPBj eTATHex tþ 3 380 Km
- kúNatpúCatkúext tþ³
- púCatél x 76 3 179/63 Km

2 - famBI - Tiksit

- famBI GKÍsl
- GanPaBtMlg 3 150 KVA
- GanPaBpl it 3 125 KVA
- tM 3 1800 erol ¼Kwh

• varGKÍsl³ {skónBI }

- ERBkeRkamT4
- ctjayaBITrhex tþ 3 100 Km
- kúM alj 3 235 MW
- ERBkrevogT11
- ctjayaBITrhex tþ 3 70 Km
- kúM alj 3 7 MW
- ERBkrevogT12
- ctjayaBITrhex tþ 3 80 Km
- kúM alj 3 5 MW
- ERBkc,ar
- ctjayaBITrhex tþ 3 95 Km
- kúM alj 3 5 MW
- ERBkGtþayT11
- ctjayaBITrhex tþ 3 20 Km
- kúM alj 3 5 MW
- ERBkGtþayT12
- ctjayaBITrhex tþ 3 23 Km
- kúM alj 3 4 MW
- ERBkGtþayT13
- ctjayaBITrhex tþ 3 25 Km
- kúM alj 3 5 MW
- ERBkGtþayT14
- ctjayaBITrhex tþ 3 30 Km
- kúM alj 3 7 MW
- ERBkeBarT11
- ctjayaBITrhex tþ 3 35 Km

kW atj	3	17 MW
- ERBkeBarT12		
ctjajBITrhextp	3	40 Km
kW atj	3	8 MW
- ERBkeBarT13		
ctjajBITrhextp	3	45 Km
kW atj	3	9 MW
3- GakascrN_		
• RBl anynphatfakCati	3	rdæl xaFikardanGakascrN_suil manKWragGPiDinRBl anenH
- xät	3	3 C
- RbePTynphatfclct	3	ATR72, AN24, Y12, Y7
- smtPaBTTY GikdNtr	3	50:000 nak;¼qM
4- FarasaRsp	3	
• RbBnFarasa®Sp	3	18 kEng
• ITPaBersacRSB	3	8001 ht
- küendRSUvSa	3	3001 ht

X- visyevakmp

1- GbrM		
• chhsal amFümskSa	3	5 chhsisS ³ 719 nak;
2- Tükmnakmn_		
• bNbj bBafSij al ;	3	Microwave páyrNb
• RbBnTisBil ½	3	CAMSHIN, MOBITEL, CASACOM
- tül esvaTis Bkgrsk	3	4 esn- 11 esn du ¼naTl
- RskmanesvaTis Bp	3	RkqEsnmenarmü
• tül esvaTis BETAERKARbeTs	3	80 esn- 180 esn du ¼naTl
3- sxaP)al		
• mnpeBTübEgktamextp	3	1
• chMERK	3	55
• smtPaBBü)al ³		
- CPA 2	:	1

g- visyeTscrN_

1- rmNlydmFmCati	3	TükFakbRsa rmna menarmü TükFakdakdaMPhBU ty cMarkSI ; GittatLadj tINakesp Glet
2- pHSINak; ³		
• chhphHSINak;	3	14 chhbrb; ³ 152

RkqPbBj

k- BtmanTETA

1 - eQpHRkg	3	RkgPbBj
2 - épRkLaRkg ⁻¹	3	290 Km ²
3 - sNandl	3	val TTab
4 - GakasFatu	3	Gtbrma 32/4 °C Gb, brma 23/8 °C
5 - cMhRbCaCnsrb ⁻²	3	
• qam 998	3	1 000 000 nak;
•)anspncal 2010	3	1 656 000 nak;
• RbCaCn 18 qam Lg ⁻³	3	546 400 nak;
- kigenaRsl	3	296 065 nak;
- Rbus	3	250 335 nak;
6 - dgsbt	3	3 448 nak/Km ²
7 - cMhXlc ⁻³	3	7
8 - cMhsgat ⁻³	3	76
9 - cMhPthi ⁻³	3	685
10 - RBRBTI ;	3	xagektCabextkNpl
	3	xaglcCabextkNpl
	3	xageCgCabextkNpl
	3	xagt,lgCabextkNpl
11 - RckGpCati	3	RBl anyrphahGnpCatPbBj kBgEpPbBj
12 - brmaNtkePog - KitCamFum ;	3	1 378 mm ¼ qam
13 - PasakRbas;	3	Exp)araj Ggekis chTaClv hokon knbj kkgwot Nam ef

x- visy/kskmp

1 - dNalRSU	3	7 930 ht
Tnp l	3	2 72 t/ht
2 - dNalJlSahkmp	3	36 ht
3 - ckarEp eOl	3	705 ht
4 - dNalHpsM	3	1 439 ht
5 - Cl pl		
• pl ensaTTksab	3	13 500 t
• varlvb, kmTksab		
- RtlSac;	3	2 700 t
- RkeBl	3	3 000 k, al
• pl ensaTnabj	3	5 910
6 - bsistlvqal 2003		
• srbeKa-Rkbl	3	17 492 k, al

	3	30 du ¼kgETnWkanThij	20 ht
	3	86 du ¼kgETnWpkThij	40 ht
	3	43 du ¼kgETnWkanThij	40 ht
- karepThij ray	3	3/16 du ¼etan	
- manesvaEpepSg ²	3	www.ppap.com.kh	
• tñl dkCBañ	3		
- pñEdk			
>Thij eTAPñBj -RkgRBHShnu ³		69 erol ¼t>Km	
>Thij eTAsispn	3	77 erol ¼ t>Km	
>Gkcdñr	3	60 erol ¼nak>Km	
>dkerBogeTARKgRBHShnu ³		5/55 du ¼ t	
>dkerBogeTA)atdñg	3	6/5 du ¼ t	
- pñeKak ³			
kgETnW20ht	3	-100 du ñ ÷ 10>77 du ñ; ¼kgETnW	
kgETnW40 ht	3	-130 du ñ ÷ 13>86 du ñ; ¼kgETnW	
4- GakascrN ³			
• RBl anynphatGrpCati	3		
- xät	3	4c	
- RbePTynphdclct	3	B767, B757, B737, B717	
	3	A300, A320, ATR72, AN26, AN24	
	3	Y7, Y12, F27, F28	
- smtPaBTTY Gkcdñr	3	1>500>900 nak; ¼qñM	
- smtPaBdkThij	3	10>900etan ¼ qñM	
5- FarasaRsp	3		
• RbBñFarasa®Sp	3	10 kEng	
• I TPaBersacsB	3	6>323 ht	
- kñgenalRsuvsSa	3	4>750 ht	
- RstR)atñ	3	1>578 ht	
• sanlybñTik	3	6 kEng	
X- visYesvakmp			
1- GbrM	3		
• chñmhavTual Yyrdae	3	10 chñhsisS ³ 5>571 nak;	
• chñmhavTual YyÉkCn	3	28 chñhsisS ³ 2>152	
• chñhsal amFñmskSa	3	30 chñhsisS ³ 91>896 nak;	
• chñhsal aPasa	3	50	
2- ThKmnakmn ³			
• bñpñ bBañSij al;	3	kabGñTc Microwave	
• RbBññhs BñGcl ñ	3	MPTC, CAMINTEL, CAMSHIN	

- töl esvaTUs BkgrBeTs	3	1 esn- 10 esn du a/naTl
• RbBHTUs Bcl ½	3	CAMSHIN, MOBITEL, CASACOM
- töl esvaTUs BkgrBeTs	3	4 esn- 11 esn du a/naTl
- xP/thanesvaTUs Bp	3	xP/BMarMn xP/BbeBj xP/Bmkra xP/BTV eKak xP/Blegá
• töl esvaTUs BTAerKARbeTs	3	80 esn- 180 esn du a/naTl
3- svaP)al		
• mnBeTüfakCati	3	kal EmRt mCämNß KaBarmatanigTark Knß)äö
		kmarCati RBH)aTneraPnsInnu RBHGg)g
		RBHkism³ mCämNß C)g)ngsh
• chMERK	3	66>703
• mnBesaFnGrpCati	3	vTüasIn)as½
• smtPaBBüa)al	3	
-CPA 3	:	9

g- viskyeTscrN_

1- sarmnß	3	sarmnßCati]RkideMbl yBCsasnlV Esq
		val BIXatbueCgÉk
2- rmNlydnRvvt)saRsp	3	RBHbrmraCvad) vtPm RBHvharRBHEkvmrkt vmanÉkraCü
3- sNakar³		
• chHsNakar	3	128 chHbrb;³6>525
4- p)HsINak;³		
• chHhp)HsINak;	3	141 chHbrb;³2>191

c- visky skpnBl nigGaTPaBsMabkarGPvDineBl GnaKt ³

- 1-]sSahkmfkécñ
- 2-]sSahkmxät tt-mFüm
- 3- ksi-]sSahkmp
- 4- esvab)teTscrN¾
- 6-]sSahkmGtBl kmp

-1 | ÉksarKs)gmhae)pb)M 998
-2 | esovePAS)ical 2003
-3 | r)aykarNRKs)gmhae)pb)M 004

ext RBHvar

k- BtmanTØTA		
1- Thnextp	3	RBHvar
2- épRkLaexþ ⁻¹	3	13>788 Km ²
3- sNandl	3	tMnxgrab
4- GakasFatu	3	Gtbrma 34/7 °C Gb,brma 24/7 °C
5- cMhRbCaCnsrb ⁻²	3	
• qam 998	3	81>Ø70 nak;
•)arsp qam 2010	3	188>Ø00 nak;
• RbCaCn 18 qam Lg ⁻³	3	67>793 nak;
- kúgenalRSI	3	35>Ø55 nak;
- Rbis	3	32>738 nak;
6- dgsbt	3	9 nak/Km ²
7- cMhRsk ⁻³	3	7
8- cMhXM ⁻³	3	49
9- cMhPthi ⁻³	3	208
10- RBbTl ;	3	xagekt Cabext þstjertg nigRbeT s Lav
	3	xagl ic Cabext þsomrab nigext þ tþmanCk
	3	xageCg CabRbeT s Lav nigRbeT séf
	3	xagt, lg Cabext þkgFM
11- CnCatPaktic	3	kly Bk
12- RcktMn;	3	GanesH
13- RckeTPakl	3	RjasaTRBHvar
14- brimaN TikeÞog -KitCamFüm!	3	1>221/1 mm ¼qam
x- viskykskmp		
1- dMNaRISU	3	22>105 ht
Trip l	3	1/93 t/4ht
2- dMNaRIS Sahkmp	3	4>371 ht
• kúgenalman ³ - sEN þcdl	3	1>298 ht
- sEN þesog	3	940 ht
- l q	3	2>133 ht
3- cMarEp øQl	3	386 ht
4- dMNaRIS SM	3	1>739 ht
5- Cl pl		
• pl ensaTnabj	3	200 t
6- bsstVqam 2003		
• srbeKa-Rkbl	3	99>491 k,al
• karcBamstCal kN ³ ksidan		

- srbRCK 3 57532 k,al
 - srbstSab 3 484645 k,al

K- viskyehdarcnasmKs

1- saFarNkar

• puCatBPBJ eTATInextp 3 294 Km
 • kNnatpuCatkgextp
 - puCatel x 62 3 2049 Km
 - puCatel x 66 3 965 Km

2- famBI - Tikst

• famBI GKsni
 - GanPaBtMlg 3 1>190 KVA
 - GanPaBpIit 3 645 KVA
 - tM 3 1>500 erol ¼Kwh

3- GakascrN_

• RBl anynphdFakCati 3 rdæl xaFikardanGakascrN_snil manKltagGPivDInRBl aenH
 - xät 3 3c
 - RbePTynphdclct 3 AN24, ATR72, Y12, Y7
 - smtPaBTTV GkdkNt 3 pkkkareRk)as;

4- FarasaRsp

• RbBnFarasSp 3 94 kEng
 • ITPaBersacsRB 3 30>366 ht
 - kjendRslvsa 3 24070 ht
 - RstR)ad 3 6269 ht

X- viskyesvakmp

1- GbrM

• chhsal amFümskSa 3 8 chhsisS³ 3>469nak;

2- Tikmnakmn_

• bNbj bBaSij al; 3 Microwave
 • RbBnTisBeI 3 CAMSHIN, MOBITEL, CASACOM
 - tM esvaTis Rkgrsk 3 4 esn- 11 esn du a/naTI
 - RskmanesvaTis Bp 3 RskEkomanCly
 • tM esvaTis BeTAerKARbeTs 3 80 esn- 180 esn du a/naTI

3- swaP)al

• mnheBTubEgktamextp 3 1
 • chMERK 3 135
 • smtPaBBia)al 3

- CPA 2 : 1

g- viskyeTscr

1 - rmNlydnRovt saRsp	3	R)asaTRBHvihar R)asaTekahEkr R)asaTRBHxh R)asaTG kb s R)asaT)akan R)asaTRkBlDk braNdam RB
2 - p s Nak; ³		
• ch hp s Nak;	3	10 ch h brb; ³ 95
c- FnFanFm ati		
1 - FnFanEr:		
• Erml bEdn	3	P l g
• ErS N -TgEdg-sg s	3	P B P k (*) P Bg (*)
• Ermas	3	P l g (**) r bg (**) P k(**)
• ErEdk	3	P k 1 P k 2 (**) P k 3 (**) P k (*) P B an (*) f s l (*) Eqb1 (*) Eqb2 (*) eka Ekv(*) P h q p
• Er:t g f u	3	P h (**) P p P p
• ErF g f u	3	revog
• Erm g ka E N s	3	P k 3 Eqb1 Eqb2
• f p ab	3	k g r se LA1 k g r se LA2
2 - Chk st RB		
• K B n-R B p TB	3	402-500 ht - p k Laen H Kit s ro T g Chk st RB K B n -R B p TB Ed s k g ext p som rab
• b g E Br	3	242-500 ht - p k Laen H Kit s ro T g Chk st RB b g E Br Ed s k g ext p som rab ext k g f l
3 - t l n kar Bare T S Pa B		
• R B vihar	3	5000 ht
q- v s y sk p n B nig Ga T Pa B s t b kar G P v D ne B G na K t ³		
1 - K l rag G P v D n h K at l n R B l n k m a - f		
2 - k s j s S a h k m u		
3 - K l rag G P v D n t l n R)asaTRBHvihar		
4 - R b B n Z a r a s a S p		
5 - k a r E G a C v k m f n F a n E r:		

-1| |Éksar|K|s|y|m|h|a|e|p|a|M| 998
-2| |esove|P|A|s|t|f|a|M| 2003
-3| |r|a|y|k|a|r|N|R|K|s|y|m|h|a|e|p|a|M| 2004
(*) t|l|n|sk|S|a|S|a|v|C|a|v|e|k|a|m| MOU (**) t|l|n|Ed|l|)an|p|l|s|m|,|T|a|n

extRBEvg

k- BtmanTtTA		
1- Thnextp	3	eRBEvg
2- épRkLaextp ⁻¹	3	4883 Km ²
3- sNandl	3	TTab>ekak
4- GakasFatu	3	Gtbrma 33 °c Gb,brima 23/9 °c
5- cMhRbCaCnsrb ⁻²	3	
• qāM 998	3	946>040 nak;
•)anspncāM 2010	3	1>192>000 nak;
• RbCaCn18qāM Lg ⁻³	3	602>717 nak;
- kūgenahRsl	3	325>652 nak;
- Rbis	3	277>065 nak;
6- dgsbt	3	194 nak/Km ²
7- cMhRsk ⁻³	3	12
8- cMhXM ⁻³	3	116
9- cMhPthi ⁻³	3	1>138
10- RBRbTl ;	3	xagektCabextlshyerog
	3	xagl icCabextkNpl
	3	xageCgCabextkBgcam
	3	xagt,lgCabRbeTsevtNam
11- Rcktdln;	3	RckekahsMBA Bamnenbr
12- RckeTPakl	3	bnlyckkl
13- brimaNTikePög -KitCamFüm;	3	1>221/1 mm ¼qāM
x- viskykskmp		
1- dMNaRlsU	3	295>311 ht
Tnjp l	3	1/8 t/ht
2- dMNaRlsSahkmp	3	4864 ht
• kūgenahman ³ - l ¶	3	3>760 ht
3- cMarEp øQl	3	4022 ht
4- dMNaRlhpSM	3	5018 ht
• kūgenahman ³ - eBat	3	1>842 ht
- sE(Nk)ay	3	2>253 ht
5- Cl pl		
• pl ensaTtkSab	3	8>983 t
• varlvb, kmTtkSab Rtsac;	3	750 t
• pl ensaTnabj	3	500 t
6- bsstlvqāM 2003		
• srbeKa-Rkbl	3	337>357 k,al

- karcBaistCal kN³ksidan
- srbRCK 3 213-232 k,al
- srbstVab 3 1-694-818 k,al

K- visVehdarncasmKš

1 - saFarNkar

- púCatBPBJ eTATrhextp 3 90Km
- púTik 3 239 Km
- kN³NatpúCatkúextp³
 - púCatel x 1 3 40/64 Km
 - púCatel x 8 3 28/58 Km
 - púCatel x 11 3 68/09 Km
 - púCatel x 13 3 21/56 Km

2 - famBI - Tikšit

- famBI GKšnl
 - GanPaBtMlg 3 1-250 KVA
 - GanPaBpl it 3 850 KVA
 - tMl 3 1>100 erol ¼ Kwh
- Tikšit
 - smtPaBpl it 3 700 m³ ¼ Fŋ
 - brimaNpl it)an 3 300 m³ ¼ Fŋ
 - tMl 3 900 erol ¼ m³

3 - dkkCBaš

- saLag 3
- Gike l Og 3 1eKÓg cDNH 120 t nig 1eKÓg cDNH 150 t
- tMl dkkCBaš
 - púeKak THij 3 500erol ¼t>Km
 - GikdMŋr 3 55 erol ¼nak>Km
 - púTik THij 3 300erol ¼ t>Km
 - GikdMŋr 3 30erol ¼nak>Km

4- FarasaRsp

- RbBnVzaras^{Sp} 3 141 kEng
- I TPaBersackSB 3 71-221 ht
- kúgenalRsuvsSa 3 31/57 ht
- RstR)atj 3 39-51 ht
- saŋlybthTk 3 10 kEng

X- visVesvakmp

1 - GbrM

- cMhMhaviTual Vyrda 3 1 cMhšis³ 140 nak;
- cMhšal amF ümskSa 3 72 cMhšis³ 44-193 nak;

2- Tilkinnakmn_			
• bNlj bBaðslj al ;	3	kabGkTic Microwave	
• RbBjTis BGl %	3	MPTC -Gkel Og! CAMINTEL	
- tll esvaTis Bk gRsk	3	1 esn- 10 esn du a/naTI	
• RbBjTis BGl %	3	CAMSHIN, MOBITEL, CASACOM	
- tll esvaTis Bk gRsk	3	4 esn- 11 esn du a/naTI	
- EdnesvaTis BGl %	3		
. CAMSHIN	3	RskkBgRTEbk eRBEvg Bamrk_kBg! av	
. CASACOM	3	RskkBgRTEbk Bamrk_kBg! av	
. MOBITEL	3	RskkBgRTEbk eRBEvg)aPmkaymar sFrkNpl Bamrk_kBg! av	
• tll esvaTis BTAerKARbeTs	3	80 esn- 180 esn du a/naTI	
3- sxaP)al			
• mnheBTubEgktamext p	3	7	
• chMERK	3	444	
• smtPaBBia)al ³			
- CPA 1	:	3	
- CPA 2	:	4	
g- visyeTscrN_			
1- rmNlydnRvvtIsaRsp	3	nKrPm)arayNGENIt	
2- sNakar			
• chhsNakar	3	4	chhbrb; ³ 41
3- phsNak; ³			
• chhphsNak;	3	5	chhbrb; ³ 57
c- visy skpnBI nigGaTPaBsmbkarGPivDfineBI GnaKt ³			
1- kskmp -dlnNahbEpedlnNarsU dlnNahpSM!			
2- varlvb, kmp			

-1 | EksarRksghaepal 998
-2 | esovePASifnal 2003
-3 | r)aykarNRksghaepal 2004

extpBaFisat;

k- BtmanTETA		
1- Thhextp	3	eBaFisat;
2- épRkLaextp ⁻¹	3	12692 Km ²
3- sNandl	3	TtAbkNp t Nngrab t NéRBPMinigTensab
4- GakasFatu	3	Gtbrma 34 °C Gb,brima 22 °C
5- c N RbCaCnsrb ⁻²	3	
• qāM 998	3	360x440 nak;
•)anspnqāM 2010	3	517x000 nak;
• RbCaCn 18qāM Lg ⁻³	3	192x176 nak;
- k jenalRsl	3	102x12 nak;
- Rb s	3	89x64 nak;
6- dgsbt	3	26 nak/4Km ²
7- c N Rsk ⁻³	3	6
8- c N X ⁻³	3	49
9- c N P ⁻³	3	554
10- RBRbTl ;	3	xagektCabextk B gq d
	3	xag icCabRbet séf nigextp at d g
	3	xageCb Cab Tensab
	3	xagt g Cabextk B g s Wnigextp k k g
11- CnCatPakTic	3	CnCatB
12- Rckt N;	3	P s s sanC y C N H p 56
13- brimaN TikePög -KitCamFüm	3	1x368/3 mm ¼qāM
x- vis y kskmp		
1- d N N s U	3	85x000 ht
T p l	3	1/91 t /ht
2- d N N s Sahkmp	3	5x000 ht
3- c k arEp ø Q	3	862 ht
4- d N N H p S	3	8x000 ht
5- C l p l		
• p l ensaT k s ab	3	17x550 t
• var v b ,k mp T k s ab		
- R t s ac;	3	1x340 t
- R ke B l	3	690 k,al
• p l ensaT n ab c j	3	4x235 t
6- bs st v q āM 2003		
• s r be Ka-R k b l	3	144x090 k,al
• k arc B an st C al k N ³ ks dan		

- srboRCK	3	112-994 k,aI
- srboStVab	3	753-132 k,aI

K- vishyehdarcnasmKs

1 - SaFarNkar

• puCatBPBj eTATrhextp	3	186 Km
• puEdkBPBj eTATrhextp	3	166 Km
• kINatpuCatkgextp		
- puCatel x5	3	86 Km
- puCatel x54	3	5/3 Km
- puCatel x55	3	23/54 Km

2 - famBI - TikSIt

• famBI GKIsnl		
- GanPaBtMlg	3	2>350 KVA
- GanPaBplit	3	2010 KVA
- tM	3	1>200 erol ¼ Kwh
• TikSIt		
- smtPaBplit	3	2000 m ³ ¼efM
- brimaNplit)an	3	1500 m ³ ¼efM
- tM	3	1000 erol ¼m ³
• varGKIsnl ³ {skanBI }		
- subGaet ^(P)	3	D/S, P, I
ctJayBITrhextp	3	140 Km
kW abj	3	110 MW
)anspntMl Kbrag	3	156 M\$US
- subSRCMl ^(P)	3	D/S, P, I
ctJayBITrhextp	3	130 Km
kW abj	3	32 MW
)anspntMl Kbrag	3	65 M\$US
- eBaFisat;T11		
ctJayBITrhextp	3	90 Km
kW abj	3	75 MW
- eBaFisat;T12		
ctJayBITrhextp	3	70 Km
kW abj	3	17 MW
- eBaFisat;T13		
ctJayBITrhextp	3	30 Km
kW abj	3	1.5 MW
- eBaFisat;T14		
ctJayBITrhextp	3	25 Km
kW abj	3	1.5 MW

3 - kardikCBadi
 • tll dkkCBadi³
 - pldk
 >Thij 3 77 erol ¼etan>Km
 >GkdbNr 3 60 erol ¼nak>Km

4- FarasaRsp
 • RbBnZarasSp 3 64 kEng
 • I TPaBersacRSB 3 25435 ht
 - kjenatRSUvSa 3 24075 ht
 - RstR)adj 3 1/36 ht
 • sanlybthTik 3 1 kEng

X- visyevakmp

1 - GbrM
 • chhmhavitual yEkCn 3 1 chhsis³ 275 nak;
 • chhsal amF ümskSa 3 23 chhsis³ 15:555 nak;

2 - Tdkmnakmn_
 • bNbj bBnsij al; 3 kabGkTc Microwave
 • RbBnTds BGC l ½ 3 MPTC, CAMINTEL
 - tll esvaTds Bk gRsk 3 1 esn- 10 esn du ¼naTI
 • RbBnTds BGC l ½ 3 CAMSHIN, MOBITEL, CASACOM
 - tll esvaTds Bk gRsk 3 4 esn- 11 esn du ¼naTI
 - RskmanesvaTds B 3
 . CAMSHIN 3 RskRkKk sbAmas)akan
 . CASACOM 3 RskRkKk sbAmas)akan
 . MOBITEL 3 RskRkKk sbAmas)akan keNhg
 • tll esvaTds Bk gRsk 3 80 esn- 180 esn du ¼naTI

3 - swaP)al³
 • mnpeBTübEgktamext p 3 2
 • chMERK 3 267
 • smtPaBBia)al³
 - CPA1 : 1
 - CPA 3 : 1

g- visyeTscrN_

1 - rmNlydnRvvtIsaRsp 3]k j aXedemOg
 2 - rmNlydnFmCati 3 PW adRtac PnakRta kbgh g GtdaTikOU
 3 - sNakar³
 • chhsNakar 3 3 chhbnb;³ 83
 4 - p#sNak;³
 • chhp#sNak; 3 4 chhbnb;³ 51

c- FnFanFmġati

1 - FnFanEr:

- Erd\daē 3 Rtasl
- Erp\st\it 3 Pthicom
- ErGg;Tman; 3 ERsBag
- ErRkth 3 ERsBag
- fjaeh\dt 3 tasay

2 - EdnChk\st\ERB

- »ral ; 3 253-750 ht -épRkLaenHKitsrboTajChk\st\ERB»ral ;
Edl s\k\gext\k\Bg\Wext\k\Bg\q\q\!
- P\B\kk 3 333-800 ht -épRkLaenHKitsrboTajChk\st\ERB\B\kk
Edl s\k\gext\k\k\k\q\ ext\p\at\dl\q\!

3 - t\l\ner\br\asekch\yag

- Tensab 3 316-250 ht -épRkLaenHKitsrboTaj\l\ner\br\asekch
yagTensabEdl s\k\gext\k\Bg\q\q\ ext\k\Bg\FM
ext\p\at\dl\q\ ngext\p\omrab\!

q- vis\y\sk\p\BI nigGaTPaBs\mbkarGPivDineBI GnaKt³

- 1 - d\l\l\si]sSahkmp-d\l\l\g\ml G\BA s\k\y\c\nt\
- 2 - Ch\]sSahkmp\at\td -mF\mEdl manfjaeh\dt -f\k\kv\!Cavt\at\odm
- 3 - sb,kmp\éc\l\N\st\l\vt\at\odmG\B\rt\!
- 4 - var\G\K\l\sl
- 5 - var\l\b,kmp

extptnKH

k- BtmanTETA

1 - TThextp	3)anl g
2 - épRkLaextp ⁻¹ⁱ	3	10>782 Km ²
3 - sNandl	3	tlnxgrab mandRk h m-dexþ
4 - GakasFatu	3	Gtbrma 32/3 °c Gb,brima 22/7 °c
5 - cMhRbCaCnsrb ⁻²ⁱ	3	
• qãM 998	3	94>243 nak;
•)anspnqãM 2010	3	151 >000 nak;
• RbCaCn 18qãM Lg ⁻³ⁱ	3	55>014 nak;
- kãjenãRSl	3	28>456 nak;
- Rbõs	3	26>558 nak;
6 - dgsbt	3	9 nak/Km ²
7 - cMhRsk ⁻³ⁱ	3	9
8 - cMhXM ⁻³ⁱ	3	49
9 - cMhPthi ⁻³ⁱ	3	242
10 - RBbTl ;	3	xagekt CabRbeTsevt Nam
	3	xagl icCabextþstgERTg
	3	xageCgCabRbeTSLav
	3	xagt,lgCabextþmNd KH
11 - CnCatPaktic	3	8CnCatì-cara.y RKng Big tãH>>
12 - RckeTPaKl	3	RckGby adav
13 - brimaNTikePög -Kit CamFüm ;	3	2>153/6 mm ¼qãM

x- vislykskmp

1 - dMNaRStU	3	22>335 ht
Trip l	3	2/12 t¼ht
2 - dMNaRStU Sahkmp	3	8>942 ht
• kãjenãHman ³⁻ ekASU	3	2>300 ht
- sENkesog	3	1>374 ht
- stlycnþ	3	16>000 ht
3 - cMarEpøQl	3	882 ht
4 - dMNaRStU SM	3	1>698 ht
5 - Cl pl		
• pl ensaTTiksab	3	1>300 t
6 - bsstlvqãM 2003		
• srbeKa-Rkbl	3	43>399 k,al

- karcBanstCal kN³ksidan
 - srbRCK 3 28>157 k,al
 - srbstKsab 3 108>213 k,al

K- visyehdarncasmKs

1 - saFarNkar

- pñCatBPñBj eTATñhex tñ 3 588 Km
- kñNatpñCatñgex tñ³
 - pñCatèl x 76 3 68/45 Km
 - pñCatèl x 78 3 130/28 Km
 - pñCatèl x 78 Ga 3 36/93 Km
 - pñCatèl x 78 eb 3 38/71 Km

2 - famBI - Tksñt

- famBI GKñsnl
 - GanPaBtñl g 3 1000 KVA
 - GanPaBp l it 3 865 KVA
 - tñl 3 300 erol ¼Kwh

• Tksñt

- smtPaBp l it 3 600 m³ ¼Fñ
- brimaNp l it)an 3 180 m³ ¼Fñ
- tñl 3 900 erol ¼ m³

• varGKñsnl³ {skñBI }

- ERBk l agT11
 - clñayBITñhex tñ 3 70 Km
 - kñl alñ 3 55 MW
- ERBk l agT11 Ga
 - clñayBITñhex tñ 3 60 Km
 - kñl alñ 3 12 MW
- ERBk l agT12
 - clñayBITñhex tñ 3 80 Km
 - kñl alñ 3 44 MW
- essaneRkamT13
 - clñayBITñhex tñ 3 30 Km
 - kñl alñ 3 375 MW
- ERsBkeRkamT13
 - clñayBITñhex tñ 3 32 Km
 - kñl alñ 3 330 MW

extþsomrab

k- BtmanTØTA

1 - Tthnextþ	3	esomrab
2 - épRkLaextþ ⁻¹	3	10>299 Km ²
3 - sNandl	3	tln;Tlab
4 - GakasFatu	3	Gtbrma32/7 °c Gb,brma23/7 °c
5 - chlRbCaCnsrb ⁻²	3	
• qáll 998	3	696>160 nak;
•)anspnqáll2010	3	1>09000 nak;
• RbCaCn18qállLg ⁻³	3	395>213 nak;
- kúgenalRsl	3	210>109 nak;
- Rbús	3	185>104 nak;
6 - dgsbt	3	68 nak/4km ²
7 - chlRsk ⁻³	3	12
8 - chlXM ⁻³	3	100
9 - chlPthi ⁻³	3	875
10 - RBbTl ;	3	xagektCabextþBhvhar nigextþkgFM
	3	xagl icCabextþnlymanCly nigextþatdkg
	3	xageCgCabextþtmanCly
	3	xagt,lgCabbgTensab
11 - RckGrpCati	3	RBl anyrphalGrpCatextþsomrab
12 - brmaNtkeÞog -KitCamFum!	3	1>261/4 mm ¼ qáll

x- vislykskmp

1 - chlNalsU	3	193>000 ht
Trip l	3	1/40 t/ht
2 - chlNallsSahkmp	3	3>050 ht
3 - chlMarEp øQl	3	7>200 ht
4 - chlNalHpsM	3	11>000 ht
• kúgenalman ³ sEN(k)ay	3	1>200 ht
5 - Cl pl		
• pl ensaTtkSab	3	22>580 t
• varlvb, kmTtkSab		
- RtlSac;	3	1>830 t
- RkeBl	3	50>020 k,al
• pl ensaTnablj	3	4>400 t
6 - bsstlvqáll2003		

- srbeKa-Rkbl 3 276>182 k,al
- karcBa³stCal kN³ksidan
- srbeRCK 3 130-994 k,al
- srbeStSab 3 790>778 k,al

K- visyehdarcnasms

1- saFarNkar

- p³uCatBP³Bj eTAT³hex³tp 3 314 Km
- k³Natp³uCat³gex³tp³
- p³uCat³el x 6 3 142/5 Km
- p³uCat³el x 63 3 10 Km
- p³uCat³el x 66 3 70 Km
- p³uCat³el x 67 3 70 Km
- p³uCat³el x 60 3 43/80 Km

2- fanBI - Tiksit

- fanBI GK³snl
- GanPaBtMlg 3 10/5 MW
- GanPaBpl it 3 9 MW
- t³ell 3 880 erol 1/4Kwh
- Tiksit
- smtPaBpl it 3 8000 m³ 1/4ef³
- brimaNpl it)an 3 1000 m³ 1/4ef³
- t³ell 3 1000 erol 1/4m³

- varGK³snl³ {sk³anBI }
- s³gesomrabxagerkam
- cl³ayBIT³hex³tp 3 55 Km
- k³W ab³ 3 1/2 MW
- s³g taNat
- cl³ayBIT³hex³tp 3 100 Km
- k³W ab³ 3 4 MW

3- kardkCBad³

- t³ell dkCBad³
- p³ueKak 3 30-6 du 1/4mak;
- p³uTikmkP³Bj 3 40000 erol r120 du 1/4mak;

4- GakaScrN³

- RBl anynphaHGrpCati³
- x³at 3 4c
- RbePTynphaHclct 3 B737, B717, A320, ATR72, AN24, Y12, Y7, F27

- smtPaBTTY GkdNf	3	1 000 000 nak; ¼ qđm
- smtPaBdkThij	3	27 etan ¼ qđm
5- FarasaRsp	3	
• RbBnFarasaRsp	3	224 kEng
• ITPaBersackSB	3	122-203 ht
- kjenalRsuvsSa	3	19-214 ht
- RstR)ad	3	102-989 ht

X- viskyesvakmp

1- GbrM		
• chhmvhavitual yÉkCn	3	4 chhsis ³
• chhsal amF ümskSa	3	20 chhsis ³ 28-354 nak;
2- Ttkmnakmn ³		
• bNaj bBafSij al ;	3	kabGkTk Microwave páyrNb
• RbBnTtsBGl ½	3	MPTC, CAMINTEL
- tñ esvaTts Bk gRsk	3	1 esn- 10 esn du ¼naTI
• RbBnTtsBGl ½	3	CAMCHIN, MOBITEL, CASACOM
- tñ esvaTts Bk gRsk	3	4 esn- 11 esn du ¼naTI
- RskmanesvaTts Bp	3	
• CAMSHIN	3	RskfBk esomrab CERkg
• CASACOM	3	Rsk)akg sñtnKm bñayRsl RkLaj ; esomrab CERkg
• MOBITEL	3	Rsk)ñtnKm RkLaj ; fBk esomrab CERkg
• tñ esvaTts BTAerKARbeTs	3	80 esn- 180 esn du ¼naTI
3- swaP)al ³		
• mnbeTubEgktamextp	3	4
• chhERK	3	410
• smtPaBBüa)al ³		
- CPA 1	:	1
- CPA 2	:	2
- CPA 3	:	1

g- viskyeTscrN_

1- rmNlydnRovt)saRsp	3	R)asaTGg)vtp)asaTGg)FIR)asaTbñayRsl RkmR)asaTvg)tt RkmR)asaTvg)FIRkmR)asaTrl ½ R)asaTP)Rkam P)M)I n R)asaTP)Rk R)asaTb)ymal a
2- rmNlydnFm)cati	3	Tensab
3- sNakar	3	
• chhsNakar	3	65 chhbrb; ³ 3-938
4- p)h)Nak; ³		

- chhp#sNak; 3 151 chhbrb;³1902
- c- FnFanFmCati
 - 1- FnFanEr:
 - dNdæ 3 PkKam
 - fRkanlt 3 PkKp
 - 2-]TuanCati
 - PkKBl n 3 37-500 ht
 - 3- CkKsttRB
 - KBl n-RBhpTB 3 402-500 ht -épRkLaenHKitsrboTajCkKsttRB KBl n -RBhpTB Edl sRkKjextpRBhvar;
 - bgyEBr 3 242-500 ht -épRkLaenHKitsrboTajCkKsttRB bgyEBr Edl sRkKjextpRBhvar extpBgFM
 - 4- tWnkarBareTSPaB
 - GgÁ 3 10-800 ht
 - 5- tWneRbR)aseRchYag
 - Tensab 3 316-250 ht -épRkLaenHKitsrboTajtWneRbR)aseRch YagTensab Edl sRkKjextpBgqakj extpBgFMextpatdlog ngeBaFisat;
- q- viskypnBl nigGaTPaBSMbkarGPivDineBl GnaKt ³
 - 1- esvakmpntscrN_ 3 dVca l anvaykbeKal val RbNaldeshpSarraRtl ePaCnydanfakGpCati navaePaCnydanel ITensab raRtsemasrsil,³»»
 - 2- kskmp-dlNaldEnodNaldEpocBamstV»
 - 3- GPivDinedayRbeyal brhystSabCrakj -extpatdlog;

-1 | EksarRkStghaepal 1998
 -2 | esovePASitgal 2003
 -3 | raykarNRkStghaepal 2004

RkgRBHshnu

k- BtmanTETA

1 - eQpHRkg	3	RkgRBHshnu
2 - épRkLaextp ⁻¹	3	868 Km ²
3 - sNandl	3	CatMnPtqñism&T
4 - GakasFatu	3	Gtbrma 32/8 °C Gb,brma 23 °C
5 - cMHRbCaCnsrb ⁻²	3	
• qñM 998	3	155>690 nak;
•)anspñM 2010	3	268>000 nak;
• RbCaCn18qñM Lg ⁻³	3	87>627 nak;
- kñgen&Rsl	3	44>868 nak;
- Rbis	3	42>759 nak;
6 - dgsbt	3	179 nak/4Km ²
7 - cMHRsk ⁻³	3	3
8 - cMHRXM ⁻³	3	22
9 - cMHRPthi ⁻³	3	94
10 - RBRbTI ;	3	xagektCabextpk&T nigRkgEkb
	3	xagI icCabQdism&Téf
	3	xageCgCabextpk&Hkg
	3	xagt,lgCabQdism&Téf
11 - CnCati	3	kly
12 - RckGrpCati	3	k&gEpGrpCatRkgRBHshnu
13 - RcktMn;	3	T&brl k sñghav
14 - brmaNTikePog -KitCamFüm ;	3	2>058/3 mm ¼ qñM

x- viskykskmp

1 - dMNaRlsU	3	10>681 ht
Trip I	3	2/67 t¼ht
2 - dMNaRlsSahkmp	3	5000 ht
• kñgen&hman ³ -dtgerbg	3	4000 ht
3 - cMarEp eQl	3	1>053 ht
4 - dMNaRlmpSM	3	432 ht
5 - Cl pl		
• pl ensaTTiksab	3	180 t
• pl ensaTTiksmüP	3	18>211 t
• varlvb, kmpTiksmüP	3	1>747 t
• pl ensaTn&Cj	3	6>896 t

6- bsistlvil2003

- srbKa-Rkbl 3 11990 k,al
- karcBaistCal kN³ksidan
 - srbRCK 3 21493 k,al
 - srbstKsb 3 345171 k,al
 - srbstKka 3 3000 k,al

K- visyehdarcnasmKs

1- saFarNkar

- pUCatBPBj eTATrhextp 3 230 Km
- pUEdkBPBj eTATrhextp 3 264 Km
- kN³NatpUcatkgrkg³
 - pUcatel x 3 3 21/43 Km
 - pUcatel x 4 3 68/6 Km
 - pUcatel x 41 3 10/50 Km

2- famBI -Tksit

- famBI GKsni
 - GanPaBpl it 3 0/5-0/8 MW
 - tM 3 500 1/4kwh
- Tksit
 - smtPaBpl it 3 12000 m³ 1/4efl
 - brimaNpl it)an 3 4500 m³ 1/4efl
 - tM 3 1450 erol 1/4m³

3- kardkCBadi

- kBgEpRkgRBHsInnu 3 kBgEpGrpCati
- cNtk)al cU ct 3 Gb,brima 10000 etan nig k)al eTscrNxatFM
- CMatk 3 95 m
- smtPaBxaljskTmij 3 7500 m²
- TmWll anskkjETnW 3 60000 m²
- smtPaBel kdak; 3 5 naTvkjETnWrlsmtpaBsG,brima : 50 etan
- smtPaBcu ct 3 9eRkGg

• enAqil2005 kBgEpRkgRBHsInnungdakeGaydMNFkarEpRbEvg 240m nigTil anel kdak; kJETnW TmW >200m²

- tM esvakBgEp
 - karepbkgETnW 3 57 du 1/4kgETnWpKtmij 20 hlt
 - 3 30 du 1/4kgETnWkntmij 20 hlt
 - 3 86 du 1/4kgETnWpKtmij 40 hlt
 - 3 43 du 1/4kgETnWkntmij 40 hlt

- kareptMij ray	3	3>16 du a/etan
- manesvaEpepSg ²	3	Website: www.pas.gov.kh
• tñl dkCBñ USS¼kgETnW		
- pñeKak ³		
kgETnW20hit	3	-125du a ÷ 2156 du a;¼kgETnW
kgETnW40 hit	3	-165du a ÷ 2467 du a;¼kgETnW
- pñsmRT	3	
◦ BkBgEprkgRBHsInnaTA	3	
• tkül	3	20 hit 777 du a 40hit 1550 du a
• Qgvag -cn!	3	20 hit 700 du a 40hit 1>300 du a
• khñtan -cn!	3	20 hit 750 du a 40 hit 1>400 du a
• Lñhavr ->arabj!	3	20 hit 1>750 du a 40 hit 3>500 du a
• hñk -Galmg!	3	20 hit 1>750 du a 40 hit 3. 500 du a
◦ mkEprkgRBHsInna		
• sgdñ	3	20 hit 500 du a 40hit 700 du a
• esogeh	3	20 hit 1>100 du a 40 hit 1>650 du a
• hñkg	3	20 hit 650 du a 40hit 1>200 du a
• tkül	3	20 hit 700 du a 40hit 950 du a
• ðsan; -kñ!	3	20 hit 1>100 du a 40 hit 1>600 du a

4- GakascrN_

• RBl anynphalfakCati		
- xät	3	3 c
- RbePTynphaldict	3	ATR72, AN24, Y7, Y12,
- smtPaBTTV GkdñNñ	3	300-800 nak;¼qñ

5- FarasaRsp

• RbBñFarasa®sp	3	20 kEng
• I TPaBersackSB	3	15>30 h t
- kügendRslvsSa	3	15>30 h t

X- vis½esvakmp

1- GbrM

• chñmhavTñal yÉkCñ	3	3 chñhsisS ³ 750
• chñhsal amFñmskSa	3	9 chñhsisS ³ 8>147 nak;

2- TñKmnakmn_

• bññj bBañsñj al;	3	Microwave päyrNñb
• RbBññsññGcl ñ	3	CAMSHIN, CAMINTEL
- tñl esvatñs ðkññsk	3	1 esñ- 10 esñ du a/ñññ
• RbBññsññBcl ñ	3	CAMSHIN, MOBITEL, CASACOM

extpjt

k- BtmanTETA		
1- Thnextp	3	stjErtg
2- épRkLaextp ⁻¹ⁱ	3	11-092 Km ²
3- sNandl	3	xgrab maneRBFmçati77/23 %
4- GakasFatu	3	Gtbrma 32/6 °c Gb,brma 23 °c
5- cMhRbCaCnsrb ⁻²ⁱ	3	
• qam 998	3	81-070 nak;
•)ansanqam 2010	3	127-000 nak;
• RbCaCn 18qamLg ⁻³ⁱ	3	48-952 nak;
- kujenHRsl	3	23-677 nak;
- Rbus	3	25-275 nak;
6- dgsbt	3	7 nak/Km ²
7- cMhRsk ⁻³ⁱ	3	5
8- cMhXm ⁻³ⁱ	3	34
9- cMhPthi ⁻³ⁱ	3	128
10- RBRTI ;	3	xagektCabextjrtnKh
	3	xagI icCabextkBgFM
	3	xageCgCabRbeTsLav
	3	xagt,lgCabextRkech
11- RckGrpCati	3	dgrkL
12- brmaNtkePog -KitCamFum;	3	1-307/4 mm ¼ qam
x- visy/kskmp		
1- dNalsu	3	20-450 ht
Trip l	3	1/5 t/ht
2- dNallsSahkmp	3	2-800 ht
3- cMarEp eQi	3	1-200 ht
4- dNaltHpsM	3	3-100 ht
5- Cl pl		
• pl ensaTTksab	3	1-500 t
6- bsstVqam 2003		
• srbeKa-Rkbl	3	45-058 k,al
• karcBamstCal kN ³ ksidan		
- srbrck	3	20-000 k,al
- srbstVsab	3	95-000 k,al

K- visyeh darcnasm

1- saFarNkar

- púCatBPBj eTATrhextp 3 455 Km
- kNnatpúCatkgRkg³
 - púCatèl x 7 3 82/8 Km -manKMagSprCafj!
 - púCatèl x 66 3 49/88 Km
 - púCatèl x 78 3 66/1 Km -manKMagSprCafj!
 - púCatèl x 214 3 78 Km

2- famBI -Tksit

- famBI GKsni
 - GanPaBtMlg 3 1500 KVA
 - GanPaBpl it 3 1050 KVA
 - tM 3 2100 erol ¼Kwh
- Tksit
 - smtPaBpl it 3 700 m³ ¼Fq
 - brmaNpl it)an 3 400 m³ ¼Fq
 - tM 3 1500 erol ¼m³

• varGKsni³ {skpBI }

- ERsBkerkamT12 (P) 3 Pr/S, P
- clgayBITrhextp 3 30Km
- kM abj 3 222 MW
-)nsptMl KMag 3 339 M\$US
- essaneRk amT12 (P) 3 Pr/S, P
- clgayBITrhextp 3 28 Km
- kM abj 3 207 MW
-)nsptMl KMag 3 374 M\$US
- slyERTg
 - clgayBITrhextp 3 2 Km
 - kM abj 3 980 MW

3- kardkCBadi

- tM dlkCBadi
 - púKakGkdMNr 3 20000 erol ¼nak; -slyERTgeTARkech!
 - púTikTij 3 20000 erol ¼etan -PBJ eTAslyERTg!
 - GkdMNr 3 40000 erol ¼nak; -slyERTgeTAKBgcam!

4- GakascrN_

- RBl anynphatfakCati 3 rdæl xaFkardanGakascrN_svil manKMagGPiDAnRBl aenH
- xät 3 3c
- RbePTynphatclct 3 ATR72, AN24, Y7, Y12,

- smtPabTTY GkdNf	3	120 000 nak; 1/4dl
5- FarasaRsp	3	
• RbBnFarasaRsp	3	25 kEng
• ITPaBersacsB	3	5693 ht
- kjenalRsvsSa	3	4525 ht
- RstR)dl	3	4525 ht

X- viskyesvakmpj

1- GbrM		
• chhsal amF ümskSa	3	8 chhsisS ³ 3:038 nak;
2- Ttkmnakmn ³		
• bNbj bBdSij al ;	3	Microwave páyrNb
• RbBnTtsBScI %	3	CAMINTEL
- tMl esvaTts Bk gRsk	3	1 esn- 10 esn dl 0/4naTI
• RbBnTtsBScI %	3	CAMSHIN, MOBITEL, CASACOM
- tMl esvaTts Bk gRsk	3	4 esn- 11 esn dl 0/4naTI
- RskmanesvaTts Bp	3	RsksgjERTg
• tMl esvaTts BTAerKARbeTs	3	80 esn- 180 esn dl 0/4naTI
3- swaP)al ³		
• mnheBTübEgktamext p	3	1
• chhERK	3	107
• smtPabBüa)al	3	
- CPA 3	:	1

g- viskyeTscrN_

1- rmNlydnRovt)saRsp	3	R)asaTRBheKa R)asaTPNBHFatuR)asaT9EI g vtR)BHGF
		GNg)btan
2- rmNlydnFm)cati	3	G)Bgman; Gng)kalleQITal bygval r)Bctt bygval r)BcFM
		t)dnrams
3- sNakar ³		
• chhsNakar	3	3 chhbrb; ³ 68
4- p)hs)Nak; ³		
• chhp)hs)Nak;	3	4 chhbrb; ³ 32

c- FnFanFm)cati

1- FnFanEr:		
• d)ndæ	3	sanGag
• ErEdk	3	Gng)ClsgjERTg sanGan slg
• Er;)æh)áDit	3	c)MarKr

• Ert, úgfj	3	exan
• Ert, úgfj	3	taLat; (**) vni g;
• Ert, úgfj	3	qvg
2-]TuanCati		
• vrcy	3	332500 ht -épRkLaenHKitsrtoTald]TuanCativrcy Edl sllkögextpntnKH!

q- visyskpnBl nigGaTPaBsMbkarGPivDineBl GnaKt ³

- 1- karcBamstveKa Rkbl BEB ecom»|
- 2- ksi-]sSahkmj
- 3- plKmnakmn_
- 4- eTscrNEmCati
- 5- varvb, kmj
- 6- eFGaCvkmmFnFanEr:

extstyerog

k- BtmanTETA		
1 - TInextp	3	styerog
2 - épRkLaextp ⁻¹	3	2>966 Km ²
3 - sNandl	3	val TInab
4 - GakasFatu	3	Gtbrma 32/4 °c Gb,brima 23/8 °c
5 - cMhRbCaCnsrb ⁻²	3	
• qáll 998	3	478>250 nak;
•)anspnqáll 2010	3	620>000 nak;
• RbCaCn 18qállLg ⁻³	3	293>427 nak;
- kúgenHRsl	3	158>665 nak;
- Rbis	3	134>762 nak;
6 - dgsbt	3	161 nak/Km ²
7 - cMhRsk ⁻³	3	7
8 - cMhXm ⁻³	3	80
9 - cMhPthi ⁻³	3	690
10 - RBbTl ;	3	xagekt CabRbeT sevot Nam
	3	xag l icCabext hRBEvg
	3	xageCb Cabext kRgcam
	3	xagt, lq CabRbeT sevot Nam
11 - RckGrpCati	3)avit
12 - RcktMn;	3	bisSmn ERs)aralg sMrag
13 - RckeTPaKl	3	RBvl &
14 - brimaNTikePog -Kit CamFüm!	3	2>58/3 mm ¼qáll
x- viskyskmp		
1 - dNnRtSU	3	169>500 ht
Trip l	3	1/82 t¼ht
2 - dNnAljsSahkmp	3	952 ht
3 - cMarEp øQl	3	2>236 ht
4 - dNnAlhmpSM	3	1>356 ht
5 - Cl pl		
• pl ensaTTiksab	3	2>000 t
6 - bsstVqáll 2003		
• srbeKa-Rkbl	3	219>403 k,al
• karcBamstCal kN ³ k sidan		
- srbrCKk	3	350>947 k,al

. CASACOM	3	Rsksthyerog c ^{Pa}
. MOBITEL	3	Rsksthyerog rmasEhk sthyRCMK B geraT_c ^{Pa}
. t ill esvaTts B TAERKARbeTs	3	80 esn- 180 esn du a /naTl
3- swaP)al		
. mnheBTubEgKtamext p	3	3
. chMERK	3	298
. smtPaBBüa)al	3	
- CPA1	:	1
- CPA 2	:	1
- CPA 3	:	1

g- viskyeTscrN_

1- sNaKar ³			
. chhsNaKar	3	2	chhbrb, ³ 79
2- p#sINak; ³			
. chhp#sINak;	3	9	chhbrb, ³ 97

c- visky skpnBl nigGaTPaBsMbkarGPvDineBl GnaKt ³

- 1- Epsü b #n N# eRkamkarRt#t BritürbsKy
- 2- t#n]sSahkmp
- 3- ksi]sSahkmp

-1 | EksarRkStgmhaep~~al~~ 998
-2 | esovePAst~~al~~ 2003
-3 | r)aykarNRKStgmhaep~~al~~ 2004

extitakv

k- BtmanTETA

1 - Trhextp	3	taEkv
2 - épRkLaextp ⁻¹	3	3>563 Km ²
3 - sNandl	3	tlnyal TTab-tlnPM
4 - GakasFatu	3	Gtbrma 23/6 °C Gb,brma 23/8 °C
5 - chlRbCaCn ⁻²	3	
• qal 998 srb	3	790>160 nak;
•)anspncal 2010	3	1030000 nak;
• RbCaCn 18qalLg ⁻³	3	602>717 nak;
- kigenaRsl	3	325>652 nak;
- Rbis	3	277065 nak;
6 - dgsbt	3	277 nak/4km ²
7 - chlRsk ⁻³	3	10
8 - chlXl ⁻³	3	100
9 - chlPthi ⁻³	3	1268
10 - RBbTl ;	3	xagektCabextkNpl nigRbeTsevtNam
	3	xagl icCabextkRt nigextkRgsW
	3	xageCbCabextkRgsW nigextkNpl
	3	xagt,lgCabRbeTsevtNam
11 - RckGrpCati	3	Plin
12 - Rcktln;	3	kRgsab)akéd
13 - brmaNTikePóg -KitCamFüm;	3	967/3 mm ¼qal

x- vislykskmp

1 - chlNalsU	3	240000 ht
Trip l	3	2/42 t/ht
2 - chlNallsSahkmp	3	790 ht
3 - chlMarEp0Ql	3	6>381 ht
4 - chlNaltmpSM	3	4818 ht
5 - épblsm,Tanl toecal	3	500 ht
6 - Cl pl		
• pl ensaTTksab	3	10>752 t
• varlvb,kmTksabRtIsac;	3	430 t
• pl ensaTnalcj	3	925 t
7 - bsstlvqal 2003		
• srbKa-Rkbl	3	305>176 k,al
• karcBalfstCal kN ³ ksdan		
- srbRck	3	175>609 k,al
- srbstIsab	3	63>500 k,al

K- viskyehdarcnasm

1- saFarNkar³

- púCatBPBj eTATRhex tþ 3 78 Km
- púEdkBPBj eTATRhex tþ 3 75 Km
- kúNatpúCatkgextþ³
 - púCatel x 2 3 94/68 Km
 - púCatel x 3 3 60 Km
 - púCatel x 22 3 9/63 Km
 - púCatel x 31 3 4/82 Km

2- famBl - Tíksít

- famBl GKÍsnl
 - GanPaBtMlg 3 2>844 KVA
 - GanPaBpl it 3 2>315 KVA
 - tMl 3 900erol -2>500 erol ¼kwh
- Tíksít
 - smtPaBpl it 3 1>300 m³ ¼efl
 - brimaNpl it)an 3 765 m³ ¼efl
 - tMl 3 1800-2>500 erol ¼m³

3- kardkCBaú

- tMl dkCBaú³
 - púEdkeTAPBj 3
 - TÍlj 3 77 erol ¼etan>Km
 - GíkdMlr 3 45 erol ¼nak>Km

4- FarasaRsb

- RbBrFarasa[®]Sp 3 114 kEng
- I TPaBersackRsb 3 121>295 ht
- kúgendRslvsa 3 39>272 ht
- RslR)dlj 3 82>223 ht
- sanlybthTík 3 24 kEng

X- viskyesvakmp

1- GbrM

- cMhsal amFúmskSa 3 66 cMhsis³ 59>916 nak;

2- TíkMnakmn

- bNlj bBaúsljal; 3 Microwave
- RbBrTdsBScI ¼ 3 CAMINTEL
 - tMl esvaTds BkúRsk 3 1 esn- 10 esn du ¼naTl
- RbBrTdsBScI ¼ 3 CAM SHIN, MOBITEL, CASACOM
 - tMl esvaTds BkúRsk 3 4 esn- 11 esn du ¼naTl
 - RskmanesvaTds B 3

	. CAMSHIN	3	RskdtdEkv btl sar)aTI Rtakk; sbrag
	. CASACOM	3	RskdtdEkv KrtvS)aTI RTatj sbrag
	. MOBITEL	3	RskdtdEkv KrtvS)aTI RTatj Rtakk;
	. tll esvaTts BtAerKArbeTs	3	80 esn- 180 esn du a/naTI
3-	swaP)al	3	
	. mnpeTubEgktamextp	3	5
	. chMERK	3	395
	. smtPaBBia)al	3	
	-CPA1	:	2
	-CPA 2	:	2
	-CPA 3	:	1
g-	visyeTscrN_		
	1- rmNlydnRvvtIsaRsp	3	R)asaTPlla R)asaT)aygeka R)asaTPllst R)asaTCbBl R)asaTnagex R)asaTtarBhJengaTI vtpxg R)asaTfplh eR)asaTepak sb, kmkm shstPNaemA sb, kmfm, aj sBt
	2- rmNlydnFmCati	3	
	3- pHSINak; ³		
	. chhphsINak;	3	9 chhbrb; ³ 9
c-	FnFanFmCati		
	1- FnFanEr:		
	. ErmU bEdn	3	Pllh
	. fmad	3	kBgsac;
	. xSacs	3	Rtakk
	. fRkanlt	3	eR)asaTfplh
q-	visy skpnBI nigGaTPaBSMbkarGPivDineBI GnaKt	3	
	1- kskmjdNalsu-karcBainstV		
	2- esvabneTscrN_		
	3- ksijSahkmp		
	4- tln]Sahkmp		
	5- varlv, kmp		

-1 | EksarRksghaepal 998
-2 | esovePasfca 2003
-3 | r)aykarNRksghaepal 2004

extj tpmnCjy

k- BtmanTETA		
6- TInext tp	3] tpmnCjy
1- épRkLaext tp	3	6>158 Km ²
2- sNandl	3	tInPtl
3- GakasFatu	3	BtmanmansInly] tniym nig] bkrN_
4- cInRbCaCnsrb ⁻¹	3	
• qam 998	3	68>770 nak;
•)anspncal 2010	3	122 000 nak;
• RbCaCn 18 qam Lg ⁻²	3	61>674 nak;
- kujenalRsl	3	33>145 nak;
- Rbis	3	28>529 nak;
5- dgsbt	3	11 nak/Km ²
6- cInRsk ⁻²	3	5
7- cInXM ⁻²	3	24
8- cInPthi ⁻²	3	231
9- RBbTI ;	3	xagekt Cabext RBHinar
	3	xag l ic CabRbeTséf nig bnt bymanCjy
	3	xageCb CabRbeTséf
	3	xagt, lq Cabext psomrab
10- RckGrpCati	3	Gtspc;
x- visjy kskmpj		
1- dInNalsU	3	35910 ht
Trip l	3	1/66 t/h t
2- dInNalsSah kmpj	3	437 ht
3- cMarEp eQi	3	932 ht
4- dInNalmpSM	3	1>525 ht
5- bsstlvcal 2003		
• srbKa-Rkbl	3	55>222 k,al
• karcBamstCal kN ³ ksidan		
- srbRCK	3	25>736 k,al
- srbstlsab	3	117>924 k,al
K- visjy eh darcnasmKs		
1- saFarNkar ³		
• puCatBPBj eTATInext tp	3	469 Km
• kInNatpuCatkjext tp ³		
- puCatel x 64	3	39/81 Km
- puCatel x 68	3	75/05 Km
2- fanBl - Tksat		
• varGKsnl ³ {skanBl }		
- sbyERsg		

	MayBIThextp	3	50 Km
	km atj	3	7 MW
3-	FarasaRsp	3	
	• RbBnFarasaRsp	3	29 kEng
	• ITPaBersackSB	3	48-364 ht
	- kjenadRSUvsSa	3	43-366 ht
	- RstUR)atj	3	4998 ht
X-	visye svakmp		
	1- GbrM		
	• chhsal amF ümskSa	3	6 chhsisS ³ 2>713 nak;
	2- Ttkmnakmn ³		
	• bNbj bBafslj al ;	3	Microwave
	• RbBnTts B l %	3	CAMSHIN, MOBITEL, CASACOM
	- tll esvaTts BkjRsk	3	4 esn- 11 esn du a/naTI
	- RskmanesvaTts Bp	3	Rsksbtag RskRtBajR)asaT
	• tll esvaTts BtaekARbetS	3	80 esn- 180 esn du a/naTI
	3- sxaP)al		
	• mnpeBTübEgktamext p	3	1
	• chMERK	3	109
	• smtPaBBüa)al	3	
	- CPA 2	:	1
g-	visyeTscrN_		
	1- rmNlydnRvvtlsarSp	3	RyasaTRBh kil p#tamk p#bul Bt kEngkateTasbul Bt
	2- p#sINak; ³		
	• chhp#sINak;	3	11 chhbrb; ³ 85
c-	FnFanFmCati		
	1- FnFanEr:		
	• ErR)ak;	3	brsRTto (**) P#td)ar (*)
	• Ermas	3	brsRTto (**) P#td)ar (*)
	• ErEdk	3	k,al sbj P#tdg (*) P#tsar
q-	visy skpnBl nigGaTPaBsmkarkGPivDineBl GnaKt ³		
	1- KtagGPivDinrhKatünRBÜnkma-éf		
	2- eFVGaCvkmFnFanEr:		
	3- kskmp-dlNalmpSMRSU>>		
	4- esvabMteTscrN_		
	5- p#kmnakmn_		

-1 | EksarRkStgmhæptiall 998
-2 | esovePAstical 2003
-3 | rJaykarNRkStgmhæptiall 2004
(*) tllnSkSaSavCavekkam MOU (**) tllnEdl)anptl sm,Tan

RkgEkb

k- BtmanTETA

1- eQpRkg	3	RkgEkb
2- épRkLaextp ⁻¹	3	335/80 Km ²
3- sNandl	3	tbnPNCabmat,sm&T
4- GakasFatu	3	Gtbrma 30 °c Gb,brma 23 °c
5- cMhRbCaCnsrb ⁻²	3	
• qam1998	3	28>660 nak;
• kar)anspncam2010	3	51>000 nak;
• RbCaCn18qamLg ⁻³	3	17>639 nak;
- kujenarRsl	3	9>266 nak;
- Rbis	3	8>373 nak;
6- dgsbt	3	2>2 nak; ¼ Km ²
7- cMhRsk ⁻³	3	2
8- cMhXm ⁻³	3	5
9- cMhPthi ⁻³	3	16
10- RBRTI ;	3	xagekitCabextjtaEkv
	3	xagI icCabRkgRBHshnu
	3	xageCgCabextk&T
	3	xagt,lgCabsmTP
11- RcktWneTPaKI	3	ekalhsS
12- brmaNtikePog -KitCamFum;	3	1>800 mm ¼ qam

x- visykskmp

1- dNallSU	3	2>910 ht
Trip I	3	2>07 t¼ht
2- dNallSsahkmp	3	1>045 ht
3- cMarEp eQl	3	1>082 ht
4- dNallhpsM	3	1>306 ht
5- Cl pl	3	790 t
6- bsstVqam2003		
• srbeKa-Rkbl	3	10>176 k,al
• karcBamstCal kN ³ ksidan		
- srbrCKk	3	6>178 k,al
- srbrstSab	3	31>497 k,al

K- visyehdarncasm

1- saFarNkar

- púCatBPBJ eTATHex tþ 3 175 Km
- púTtk 3 GacdkCBatamsmRTeTAex tþ kHkg RkgRBHShnu nigevotNam
- kMnatpúCatkgex tþ
- púCatel x 3 3 15/11 Km
- púCatel x 3 3 Ga 3 19/14 Km

2- famBI - Tiksat

- famBI GKsni
- GanPaBtMlg 3 250 KVA
- GanPaBpl it 3 200 KVA
- tM 3 1000 erol ¼ Kwh

3- kardkCBat

- tM dkCBat
- púKak eTAPBJ 3 7000 erol ¼ nak;

4- FarasaRsp

- RbBrFarasaRsp 3 9 kEng
- I TPaBersackSB 3 3>786 ht
- kúgenarRsuvsSa 3 3>126 ht
- RstR)atj 3 660 ht

X- visyevakmp

1- GbrM

- chhsal amF úmskSa 3 3 chhsis³ 1>434 nak;

2- Tikmnakmn

- bNbj bBstj al; 3 Microwave
- RbBrTis Bcl ½ 3 CAMSHIN, MOBITEL, CASACOM
- tM esvaTis BkgRsk 3 4 esn- 11 esn du ¼naTI
- xNhanesvaTis Bp 3 xNtkb
- tM esvaTis BTAerKARbetS 3 80 esn- 180 esn du ¼naTI

3- swaP)al

- mnheBTubEgktamext þ 3 1
- chMERK 3 54
- smtPaBBia)al 3
- CPA 1 : 1

g- visyeTscrN_

1- rmNlydmFmCati

3

ekalTnSay eRBekagkag ekateBaF>ekateSH

2- tldneqñ

3

eqñEkb eqñGegal eqñEkb

3- sNakar³

• chlhsNakar

3

1 chlhbnd³19

4- p#sNak³

• chlhp#sNak;

3

10 chlhbnd³78

c- FnFanFmCati

1-]TuanCati

• Ekb

3

5000 ht -ép#kLaenHKitsrtoTald]TuanCatiEkb

Edl sftkñextkñt;

• eRBekagkag

3

600 ht

• es#smü#páfju

• st#smü#Rm -RCkTik GeN#smü# epSat ;

q- visy skpnBI nigGaTPaBsmbkarGPivDineBI GnaKt³

1- famBI nigTksñt

2- pñkmmakmn_

3- tldneqñ nigEdnekaH

4- sNakar

5- varlvb, knp

-1 |ÉksarRksghaepñal 998

-2 | esovePasñal 2003

-3 | rJaykarNRksghaepñal 2004

Rkgebl in

k- BtmanTETA

1 - eQpRkqg	3	Rkgebl in
2 - épRkLaextp ⁻¹	3	803 Km ²
3 - sNandl	3	xgrab
4 - GakasFatu	3	Gtbrma29 °c Gb,brma 27 °c
5 - cMhRbCaCnsrb ⁻²	3	
• qat1998	3	22900 nak;
•)anspncat2010	3	43900 nak;
• RbCaCn18qatLg ⁻³	3	24633 nak;
- kújenahRsl	3	10757 nak;
- Rbis	3	13876 nak;
6 - dgsbt	3	29 nak; ¼Km ²
7 - cMhRsk ⁻³	3	2
8 - cMhXM ⁻³	3	8
9 - cMhPthi ⁻³	3	79
10 - RBbTl ;	3	xagektCabextDatdldg
	3	xaglicCabRbeTséf
	3	xageCgCabextDatdldg;
	3	xagt,lgCabextDatdldg;
11 - CnCatPakTic	3	ExpKLLa
12 - RckGrpCati	3	RckRBM
13 - Rcktldn;	3	-)anestsldkEng;

x- vislykskmp

1 - dNalrsU	3	11500 ht
Trip l	3	275 t/ht
2 - dNalrsSahkmp	3	9972 ht
• kújenahman ³ - sENkesog	3	3457 ht
- l q	3	2902 ht
3 - cMarEp eQl	3	160 ht
4 - dNalrhpSM	3	5113 ht
• kújenahman ³ - eBat	3	4613 ht
5 - bsstlqat2003		
• srbeKa-Rkbl	3	2322 k,al

- karcBařstCal kN³ksidan 3 man2kEng
- srbRCK 3 1245 k,al
- srbstVab 3 2600 k,al

K- viskyehdarcnasms

1 - saFarNkar

- puCatBPBj eTATrhextp 3 371 Km
- kNnatpuCatkgextp 3
- puCatel x 57 3 39/52 Km

2 - famBI - Tiksit

- famBI GKIsnl
- GanPaBtMlg 3 880 KVA
- GanPaBpl it 3 450 KVA
- tMl 3 850 erol 1/4 Kwh
- Tiksit
- smtPaBpl it 3 1200 m³ 1/4efl
- brimaNpl it)an 3 300 m³ 1/4efl
- tMl 3 1500 erol 1/4 m³

3 - kardkCBař

- tMl dkCBař
- puKakeTAPBj 3 45000 erol 1/4nak;

4 - FarasaRsp

- RbBnFarasa[®]Sp 3 01 kEng
- ITPaBksackSB 3 520 ht
- kjenalRSUvSa 3 520 ht

X- viskyesvakmp

1 - GbrM

- chhsal amFimskSa 3 3 chhsisS³ 2152 nak;

2 - Tdkmnakmn_

- bNbj bBařsij al ; 3 Microwave
- RbBnTis Bcl 1/2 3 CAMSHIN, MOBITEL, CASACOM
- tMl esvaTis BkijRsk 3 4 esn- 11 esn du 1/4naTI
- xNlBsvaTis Bcl 1/2 3 xNlBcl in
- tMl esvaTis BTAerKARbeTs 3 80 esn- 180 esn du 1/4naTI

3 - sxaP)al

- mnpeBTubEgktamextp 3 1

- chMERK 3 55
- smtPaBBia)al 3
- CPA 2 : 1

- g- visyeTscrN3/4
- 1- rmNlydnFmCati 3 Pnyat TikFokGttaevA slyPity slyébl in GEGm
 - 2- sNakr 3
 - chhsNakr 3 3 chhbnb; 3 140
 - 3- p#sNak; 3
 - chhphsNak; 3 8 chhbnb; 3 107

- c- FnFanFmCati
- 1- FnFanEr:
 - Ermas 3 éb:l h (*)
 - Ert, hfy 3 éb:l h (*) FernBredm (*)
 - 2- t#nerbR)aseRchYag
 - sMLt 3 60000 ht -épRkLaenHKitsrbTajtt#nerbR)aseRch yagsMLt Edl s#k#ex t)at d#g!

- q- visy sk#nBl nigGaTPaBs#bkarGPivDineBl GnaKt 3
- 1- KbragGPivDinrhKat#nRB#dnkm#-éf
 - 2- t#n]sSahkmp
 - 3- ksi]sSahkmp
 - 4- eTscrNEfCati
 - 5- p#Kmnakmn_
 - 6- kskmp-d#NahpSM>|

-1 | ÉksarRkStymh#p#al 998
 -2 | esovePAS#ical 2003
 -3 | rJaykarNRkStymh#p#al 2004
 (*) t#nSkSarSavRCaveRkam MOU